

**HGFA rabbit pAb****Cat#: orb766675 (Manual)**

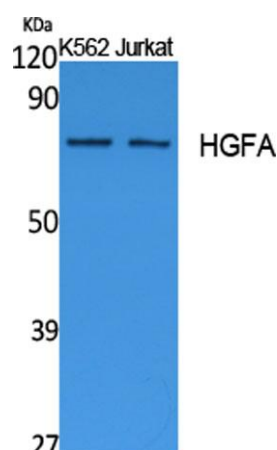
For research use only. Not intended for diagnostic use.

<b>Product Name</b>	HGFA rabbit pAb
<b>Host species</b>	Rabbit
<b>Applications</b>	WB;ELISA
<b>Species Cross-Reactivity</b>	Human;Mouse;Rat
<b>Recommended dilutions</b>	Western Blot: 1/500 - 1/2000. ELISA: 1/40000. Not yet tested in other applications.
<b>Immunogen</b>	Synthesized peptide derived from the C-terminal region of human HGFA.
<b>Specificity</b>	HGFA Polyclonal Antibody detects endogenous levels of HGFA protein.
<b>Formulation</b>	Liquid in PBS containing 50% glycerol, 0.5% BSA and 0.02% sodium azide..
<b>Storage</b>	Store at -20°C. Avoid repeated freeze-thaw cycles.
<b>Protein Name</b>	Hepatocyte growth factor activator
<b>Gene Name</b>	HGFAC
<b>Cellular localization</b>	Secreted. Secreted as an inactive single-chain precursor and is then activated to a heterodimeric form.
<b>Purification</b>	The antibody was affinity-purified from rabbit antiserum by affinity-chromatography using epitope-specific immunogen.
<b>Clonality</b>	Polyclonal

<b>Concentration</b>	1 mg/ml
<b>Observed band</b>	70kD
<b>Human Gene ID</b>	3083
<b>Human Swiss-Prot Number</b>	Q04756
<b>Alternative Names</b>	HGFAC; Hepatocyte growth factor activator; HGF activator; HGFA

### Background

This gene encodes a member of the peptidase S1 protein family. The encoded protein is first synthesized as an inactive single-chain precursor before being activated to a heterodimeric form by endoproteolytic processing. It acts as serine protease that converts hepatocyte growth factor to the active form. Alternative splicing results in multiple transcript variants. [provided by RefSeq, Jul 2014],



**Western Blot analysis of extracts from K562, Jurkat cells, using HGFA Polyclonal Antibody. Secondary antibody(catalog#:RS0002) was diluted at 1:20000**