

AR- β 2 rabbit pAb**Cat#: orb766653 (Manual)**

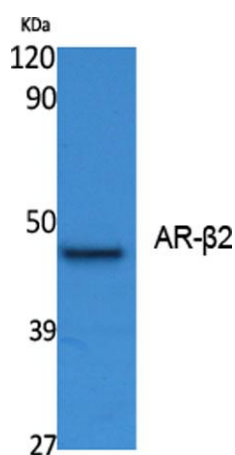
For research use only. Not intended for diagnostic use.

Product Name	AR- β 2 rabbit pAb
Host species	Rabbit
Applications	WB;ELISA
Species Cross-Reactivity	Human;Mouse;Rat
Recommended dilutions	Western Blot: 1/500 - 1/2000. ELISA: 1/5000. Not yet tested in other applications.
Immunogen	Synthesized peptide derived from AR- β 2 . at AA range: 300-380
Specificity	AR- β 2 Polyclonal Antibody detects endogenous levels of AR- β 2 protein.
Formulation	Liquid in PBS containing 50% glycerol, 0.5% BSA and 0.02% sodium azide..
Storage	Store at -20°C. Avoid repeated freeze-thaw cycles.
Protein Name	Beta-2 adrenergic receptor
Gene Name	ADRB2
Cellular localization	Cell membrane ; Multi-pass membrane protein . Early endosome . Golgi apparatus . Colocalizes with VHL at the cell membrane (PubMed:19584355). Activated receptors are internalized into endosomes prior to their degradation in lysosomes (PubMed:20559325). Activated receptors are also detected within the Golgi apparatus (PubMed:27481942). .
Purification	The antibody was affinity-purified from rabbit antiserum by affinity-chromatography using epitope-specific immunogen.

Clonality	Polyclonal
Concentration	1 mg/ml
Observed band	46kD
Human Gene ID	154
Human Swiss-Prot Number	P07550
Alternative Names	ADRB2; ADRB2R; B2AR; Beta-2 adrenergic receptor; Beta-2 adrenoceptor; Beta-2 adrenoceptor

Background

This gene encodes beta-2-adrenergic receptor which is a member of the G protein-coupled receptor superfamily. This receptor is directly associated with one of its ultimate effectors, the class C L-type calcium channel Ca(V)1.2. This receptor-channel complex also contains a G protein, an adenylyl cyclase, cAMP-dependent kinase, and the counterbalancing phosphatase, PP2A. The assembly of the signaling complex provides a mechanism that ensures specific and rapid signaling by this G protein-coupled receptor. This gene is intronless. Different polymorphic forms, point mutations, and/or downregulation of this gene are associated with nocturnal asthma, obesity and type 2 diabetes. [provided by RefSeq, Jul 2008],



Western Blot analysis of extracts from K562 cells, using AR-β2 Polyclonal Antibody. Secondary antibody(catalog#:RS0002) was diluted at 1:20000