

α -protein Kinase 1 rabbit pAb**Cat#: orb766621 (Manual)**

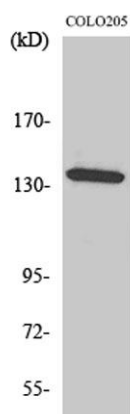
For research use only. Not intended for diagnostic use.

Product Name	α -protein Kinase 1 rabbit pAb
Host species	Rabbit
Applications	WB;IHC;IF;ELISA
Species Cross-Reactivity	Human;Mouse
Recommended dilutions	Western Blot: 1/500 - 1/2000. Immunohistochemistry: 1/100 - 1/300. Immunofluorescence: 1/200 - 1/1000. ELISA: 1/20000. Not yet tested in other applications.
Immunogen	The antiserum was produced against synthesized peptide derived from human ALPK1. AA range:11-60
Specificity	α -protein Kinase 1 Polyclonal Antibody detects endogenous levels of α -protein Kinase 1 protein.
Formulation	Liquid in PBS containing 50% glycerol, 0.5% BSA and 0.02% sodium azide..
Storage	Store at -20°C. Avoid repeated freeze-thaw cycles.
Protein Name	Alpha-protein kinase 1
Gene Name	ALPK1
Cellular localization	Cytoplasm, cytosol . Cytoplasm, cytoskeleton, spindle pole . Cytoplasm, cytoskeleton, microtubule organizing center, centrosome . Cell projection, cilium . Localized at the base of primary cilia. .
Purification	The antibody was affinity-purified from rabbit antiserum by affinity-chromatography using epitope-specific immunogen.

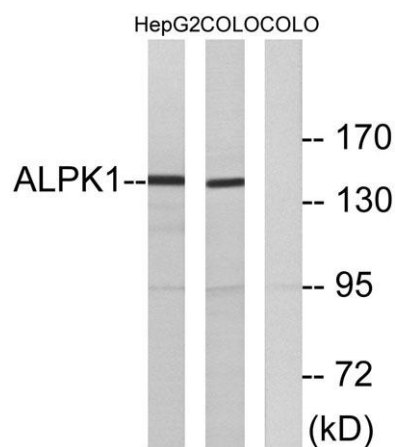
Clonality	Polyclonal
Concentration	1 mg/ml
Observed band	139kD
Human Gene ID	80216
Human Swiss-Prot Number	Q96QP1
Alternative Names	ALPK1; KIAA1527; LAK; Alpha-protein kinase 1; Chromosome 4 kinase; Lymphocyte alpha-protein kinase

Background

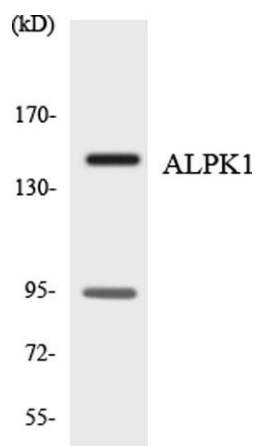
This gene encodes an alpha kinase. Mice which were homozygous for disrupted copies of this gene exhibited coordination defects (PMID: 21208416). Multiple transcript variants encoding different isoforms have been found for this gene. [provided by RefSeq, Dec 2011],



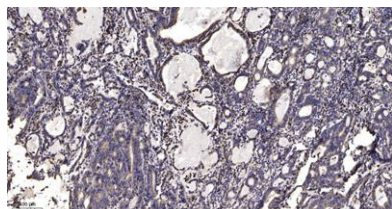
Western Blot analysis of various cells using α -protein Kinase 1 Polyclonal Antibody. Secondary antibody(catalog#:RS0002) was diluted at 1:20000



Western blot analysis of lysates from COLO and HepG2 cells, using ALPK1 Antibody. The lane on the right is blocked with the synthesized peptide.



Western blot analysis of the lysates from 293 cells using ALPK1 antibody.



Immunohistochemical analysis of paraffin-embedded human Gastric adenocarcinoma. 1, Antibody was diluted at 1:200(4° overnight). 2, Tris-EDTA,pH9.0 was used for antigen retrieval. 3,Secondary antibody was diluted at 1:200(room temperature, 45min).