

**ZZZ3 rabbit pAb****Cat#: orb766620 (Manual)**

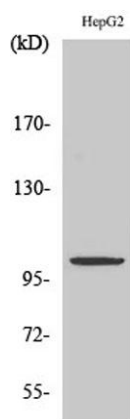
For research use only. Not intended for diagnostic use.

<b>Product Name</b>	ZZZ3 rabbit pAb
<b>Host species</b>	Rabbit
<b>Applications</b>	WB;ELISA
<b>Species Cross-Reactivity</b>	Human;Mouse;Rat
<b>Recommended dilutions</b>	Western Blot: 1/500 - 1/2000. ELISA: 1/5000. Not yet tested in other applications.
<b>Immunogen</b>	The antiserum was produced against synthesized peptide derived from human ZZZ3. AA range:341-390
<b>Specificity</b>	ZZZ3 Polyclonal Antibody detects endogenous levels of ZZZ3 protein.
<b>Formulation</b>	Liquid in PBS containing 50% glycerol, 0.5% BSA and 0.02% sodium azide..
<b>Storage</b>	Store at -20°C. Avoid repeated freeze-thaw cycles.
<b>Protein Name</b>	ZZ-type zinc finger-containing protein 3
<b>Gene Name</b>	ZZZ3
<b>Cellular localization</b>	Nucleus .
<b>Purification</b>	The antibody was affinity-purified from rabbit antiserum by affinity-chromatography using epitope-specific immunogen.
<b>Clonality</b>	Polyclonal

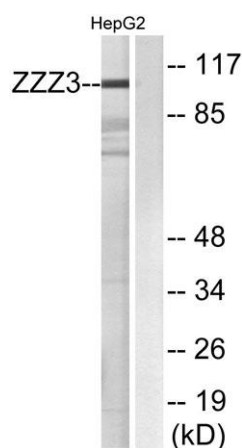
<b>Concentration</b>	1 mg/ml
<b>Observed band</b>	102kD
<b>Human Gene ID</b>	26009
<b>Human Swiss-Prot Number</b>	Q8IYH5
<b>Alternative Names</b>	ZZZ3; ZZ-type zinc finger-containing protein 3

#### Background

PTM:Phosphorylated upon DNA damage, probably by ATM or ATR.,similarity:Contains 1 HTH myb-type DNA-binding domain.,similarity:Contains 1 ZZ-type zinc finger.,



Western Blot analysis of various cells using **ZZZ3 Polyclonal Antibody**. Secondary antibody(catalog#:RS0002) was diluted at 1:20000 cells nucleus extracted by Minute <sup>TM</sup> Cytoplasmic and Nuclear Fractionation kit (SC-003,Inventbiotech,MN,USA).



Western blot analysis of lysates from HepG2 cells, using **ZZZ3 Antibody**. The lane on the right is blocked with the synthesized peptide.