

**ZNF225 rabbit pAb****Cat#: orb766609 (Manual)**

For research use only. Not intended for diagnostic use.

<b>Product Name</b>	ZNF225 rabbit pAb
<b>Host species</b>	Rabbit
<b>Applications</b>	WB;IHC;IF;ELISA
<b>Species Cross-Reactivity</b>	Human;Rat;Mouse;
<b>Recommended dilutions</b>	Western Blot: 1/500 - 1/2000. Immunohistochemistry: 1/100 - 1/300. ELISA: 1/20000. Not yet tested in other applications.
<b>Immunogen</b>	The antiserum was produced against synthesized peptide derived from human ZNF225. AA range:641-690
<b>Specificity</b>	ZNF225 Polyclonal Antibody detects endogenous levels of ZNF225 protein.
<b>Formulation</b>	Liquid in PBS containing 50% glycerol, 0.5% BSA and 0.02% sodium azide..
<b>Storage</b>	Store at -20°C. Avoid repeated freeze-thaw cycles.
<b>Protein Name</b>	Zinc finger protein 225
<b>Gene Name</b>	ZNF225
<b>Cellular localization</b>	Nucleus .
<b>Purification</b>	The antibody was affinity-purified from rabbit antiserum by affinity-chromatography using epitope-specific immunogen.
<b>Clonality</b>	Polyclonal

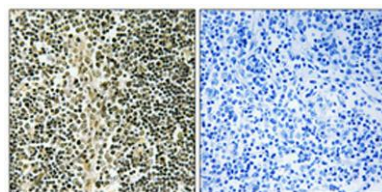
<b>Concentration</b>	1 mg/ml
<b>Observed band</b>	82kD
<b>Human Gene ID</b>	7768
<b>Human Swiss-Prot Number</b>	Q9UK10
<b>Alternative Names</b>	ZNF225; Zinc finger protein 225

#### Background

function:May be involved in transcriptional regulation.,similarity:Belongs to the krueppel C2H2-type zinc-finger protein family.,similarity:Contains 1 KRAB domain.,similarity:Contains 18 C2H2-type zinc fingers.,



**Western Blot analysis of various cells using ZNF225 Polyclonal Antibody.** Secondary antibody(catalog#:RS0002) was diluted at 1:20000 cells nucleus extracted by Minute TM Cytoplasmic and Nuclear Fractionation kit (SC-003,Inventbiotech,MN,USA).



**Immunohistochemical analysis of paraffin-embedded Human thymus gland.** Antibody was diluted at 1:100(4° overnight). High-pressure and temperature Tris-EDTA,pH8.0 was used for antigen retrieval. Negative contrl (right) obtained from antibody was pre-absorbed by immunogen peptide.

