

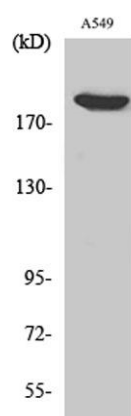
**ZC3H13 rabbit pAb****Cat#: orb766602 (Manual)**

For research use only. Not intended for diagnostic use.

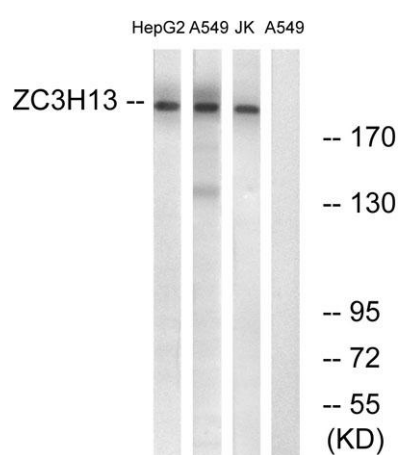
<b>Product Name</b>	ZC3H13 rabbit pAb
<b>Host species</b>	Rabbit
<b>Applications</b>	WB;ELISA
<b>Species Cross-Reactivity</b>	Human;Mouse
<b>Recommended dilutions</b>	Western Blot: 1/500 - 1/2000. ELISA: 1/10000. Not yet tested in other applications.
<b>Immunogen</b>	The antiserum was produced against synthesized peptide derived from human ZC3H13. AA range:1571-1620
<b>Specificity</b>	ZC3H13 Polyclonal Antibody detects endogenous levels of ZC3H13 protein.
<b>Formulation</b>	Liquid in PBS containing 50% glycerol, 0.5% BSA and 0.02% sodium azide..
<b>Storage</b>	Store at -20°C. Avoid repeated freeze-thaw cycles.
<b>Protein Name</b>	Zinc finger CCCH domain-containing protein 13
<b>Gene Name</b>	ZC3H13
<b>Cellular localization</b>	Nucleus speckle . Nucleus, nucleoplasm .
<b>Purification</b>	The antibody was affinity-purified from rabbit antiserum by affinity-chromatography using epitope-specific immunogen.
<b>Clonality</b>	Polyclonal

<b>Concentration</b>	1 mg/ml
<b>Observed band</b>	200kD
<b>Human Gene ID</b>	23091
<b>Human Swiss-Prot Number</b>	Q5T200
<b>Alternative Names</b>	ZC3H13; KIAA0853; Zinc finger CCCH domain-containing protein 13

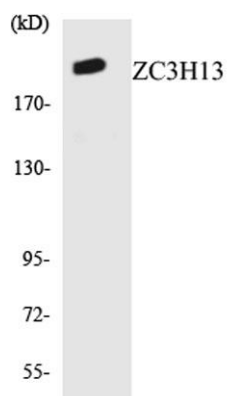
**Background** PTM:Phosphorylated upon DNA damage, probably by ATM or ATR.,similarity:Contains 1 C3H1-type zinc finger.,



**Western Blot analysis of various cells using ZC3H13 Polyclonal Antibody. Secondary antibody(catalog#:RS0002) was diluted at 1:20000**



**Western blot analysis of lysates from A549, Jurkat, HepG2 cells, using ZC3H13 Antibody. The lane on the right is blocked with the synthesized peptide.**



Western blot analysis of the lysates from HUVEC cells using ZC3H13 antibody.