

ZBTB40 rabbit pAb**Cat#: orb766600 (Manual)**

For research use only. Not intended for diagnostic use.

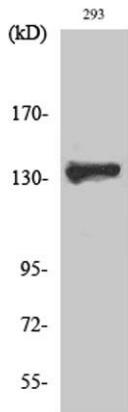
Product Name	ZBTB40 rabbit pAb
Host species	Rabbit
Applications	WB;IHC;IF;ELISA
Species Cross-Reactivity	Human;Mouse
Recommended dilutions	Western Blot: 1/500 - 1/2000. Immunohistochemistry: 1/100 - 1/300. ELISA: 1/10000. Not yet tested in other applications.
Immunogen	The antiserum was produced against synthesized peptide derived from human ZBTB40. AA range:1121-1170
Specificity	ZBTB40 Polyclonal Antibody detects endogenous levels of ZBTB40 protein.
Formulation	Liquid in PBS containing 50% glycerol, 0.5% BSA and 0.02% sodium azide..
Storage	Store at -20°C. Avoid repeated freeze-thaw cycles.
Protein Name	Zinc finger and BTB domain-containing protein 40
Gene Name	ZBTB40
Cellular localization	Nucleus .
Purification	The antibody was affinity-purified from rabbit antiserum by affinity-chromatography using epitope-specific immunogen.
Clonality	Polyclonal

Explore. Bioreagents.

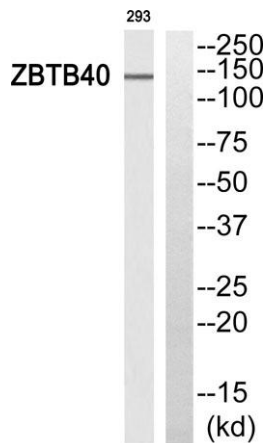
Concentration	1 mg/ml
Observed band	140kD
Human Gene ID	9923
Human Swiss-Prot Number	Q9NUA8
Alternative Names	ZBTB40; KIAA0478; Zinc finger and BTB domain-containing protein 40

Background

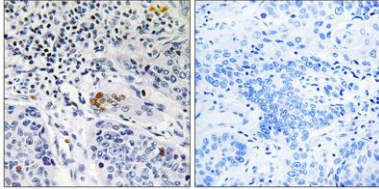
function:May be involved in transcriptional regulation.,PTM:Phosphorylated upon DNA damage, probably by ATM or ATR.,similarity:Belongs to the krueppel C2H2-type zinc-finger protein family.,similarity:Contains 1 BTB (POZ) domain.,similarity:Contains 12 C2H2-type zinc fingers.,



Western Blot analysis of various cells using ZBTB40 Polyclonal Antibody. Secondary antibody(catalog#:RS0002) was diluted at 1:20000 cells nucleus extracted by Minute TM Cytoplasmic and Nuclear Fractionation kit (SC-003,Inventbiotech,MN,USA).



Western blot analysis of ZBTB40 Antibody. The lane on the right is blocked with the ZBTB40 peptide.



Immunohistochemistry analysis of paraffin-embedded human lung carcinoma tissue, using ZBTB40 Antibody. The picture on the right is blocked with the synthesized peptide.