

## ZAC1 rabbit pAb

**Cat#: orb766596 (Manual)**

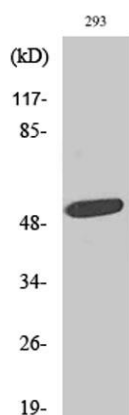
For research use only. Not intended for diagnostic use.

<b>Product Name</b>	ZAC1 rabbit pAb
<b>Host species</b>	Rabbit
<b>Applications</b>	WB;ELISA
<b>Species Cross-Reactivity</b>	Human;Rat;Mouse;
<b>Recommended dilutions</b>	Western Blot: 1/500 - 1/2000. ELISA: 1/10000. Not yet tested in other applications.
<b>Immunogen</b>	The antiserum was produced against synthesized peptide derived from human PLAGL1. AA range:311-360
<b>Specificity</b>	ZAC1 Polyclonal Antibody detects endogenous levels of ZAC1 protein.
<b>Formulation</b>	Liquid in PBS containing 50% glycerol, 0.5% BSA and 0.02% sodium azide..
<b>Storage</b>	Store at -20°C. Avoid repeated freeze-thaw cycles.
<b>Protein Name</b>	Zinc finger protein PLAGL1
<b>Gene Name</b>	PLAGL1
<b>Cellular localization</b>	Nucleus .
<b>Purification</b>	The antibody was affinity-purified from rabbit antiserum by affinity-chromatography using epitope-specific immunogen.
<b>Clonality</b>	Polyclonal

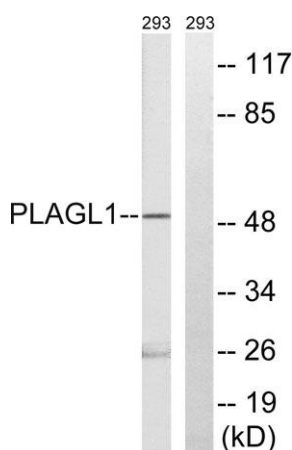
<b>Concentration</b>	1 mg/ml
<b>Observed band</b>	50kD
<b>Human Gene ID</b>	5325
<b>Human Swiss-Prot Number</b>	Q9UM63
<b>Alternative Names</b>	PLAGL1; LOT1; ZAC; Zinc finger protein PLAGL1; Lost on transformation 1; LOT-1; Pleiomorphic adenoma-like protein 1; Tumor supressor ZAC

### Background

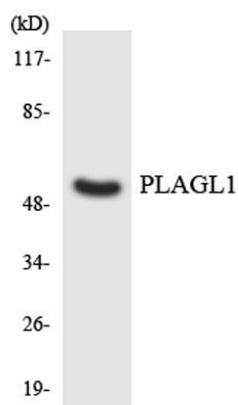
This gene encodes a C2H2 zinc finger protein that functions as a suppressor of cell growth. This gene is often deleted or methylated and silenced in cancer cells. In addition, overexpression of this gene during fetal development is thought to be the causal factor for transient neonatal diabetes mellitus (TNDM). Alternative splicing and the use of alternative promoters results in multiple transcript variants encoding two different protein isoforms. The P1 downstream promoter of this gene is imprinted, with preferential expression from the paternal allele in many tissues. [provided by RefSeq, Nov 2015],



**Western Blot analysis of various cells using ZAC1 Polyclonal Antibody. Secondary antibody(catalog#:RS0002) was diluted at 1:20000 cells nucleus extracted by Minute TM Cytoplasmic and Nuclear Fractionation kit (SC-003, Invent biotech, MN, USA).**



**Western blot analysis of lysates from 293 cells, using PLAGL1 Antibody. The lane on the right is blocked with the synthesized peptide.**



Western blot analysis of the lysates from HeLa cells using **PLAGL1** antibody.