

YEATS2 rabbit pAb**Cat#: orb766595 (Manual)**

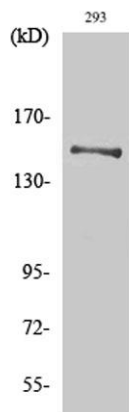
For research use only. Not intended for diagnostic use.

Product Name	YEATS2 rabbit pAb
Host species	Rabbit
Applications	WB;IHC;IF;ELISA
Species Cross-Reactivity	Human;Rat;Mouse;
Recommended dilutions	Western Blot: 1/500 - 1/2000. Immunohistochemistry: 1/100 - 1/300. ELISA: 1/5000. Not yet tested in other applications.
Immunogen	The antiserum was produced against synthesized peptide derived from human YEATS2. AA range:341-390
Specificity	YEATS2 Polyclonal Antibody detects endogenous levels of YEATS2 protein.
Formulation	Liquid in PBS containing 50% glycerol, 0.5% BSA and 0.02% sodium azide..
Storage	Store at -20°C. Avoid repeated freeze-thaw cycles.
Protein Name	YEATS domain-containing protein 2
Gene Name	YEATS2
Cellular localization	Nucleus .
Purification	The antibody was affinity-purified from rabbit antiserum by affinity-chromatography using epitope-specific immunogen.
Clonality	Polyclonal

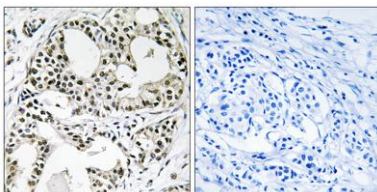
Concentration	1 mg/ml
Observed band	150kD
Human Gene ID	55689
Human Swiss-Prot Number	Q9ULM3
Alternative Names	YEATS2; KIAA1197; YEATS domain-containing protein 2

Background

YEATS2 is a scaffolding subunit of the ADA2A (TADA2A; MIM 602276)-containing (ATAC) histone acetyltransferase complex (Wang et al., 2008 [PubMed 18838386]).[supplied by OMIM, Apr 2010],



Western Blot analysis of various cells using YEATS2 Polyclonal Antibody. Secondary antibody(catalog#:RS0002) was diluted at 1:20000 cells nucleus extracted by Minute TM Cytoplasmic and Nuclear Fractionation kit (SC-003, Invent biotech, MN, USA).



Immunohistochemistry analysis of paraffin-embedded human breast carcinoma, using YEATS2 Antibody. The picture on the right is blocked with the synthesized peptide.