

XRCC2 rabbit pAb

Cat#: orb766589 (Manual)

For research use only. Not intended for diagnostic use.

Product Name	XRCC2 rabbit pAb
Host species	Rabbit
Applications	WB;IHC;IF;ELISA
Species Cross-Reactivity	Human;Rat;Mouse;
Recommended dilutions	Western Blot: 1/500 - 1/2000. Immunohistochemistry: 1/100 - 1/300. ELISA: 1/10000. Not yet tested in other applications.
Immunogen	The antiserum was produced against synthesized peptide derived from human XRCC2. AA range:211-260
Specificity	XRCC2 Polyclonal Antibody detects endogenous levels of XRCC2 protein.
Formulation	Liquid in PBS containing 50% glycerol, 0.5% BSA and 0.02% sodium azide..
Storage	Store at -20°C. Avoid repeated freeze-thaw cycles.
Protein Name	DNA repair protein XRCC2
Gene Name	XRCC2
Cellular localization	Nucleus . Cytoplasm, cytoskeleton, microtubule organizing center, centrosome .
Purification	The antibody was affinity-purified from rabbit antiserum by affinity-chromatography using epitope-specific immunogen.
Clonality	Polyclonal

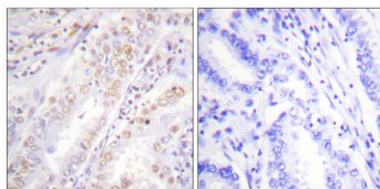
Concentration	1 mg/ml
Observed band	32kD
Human Gene ID	7516
Human Swiss-Prot Number	O43543
Alternative Names	XRCC2; DNA repair protein XRCC2; X-ray repair cross-complementing protein 2

Background

This gene encodes a member of the RecA/Rad51-related protein family that participates in homologous recombination to maintain chromosome stability and repair DNA damage. This gene is involved in the repair of DNA double-strand breaks by homologous recombination and it functionally complements Chinese hamster irs1, a repair-deficient mutant that exhibits hypersensitivity to a number of different DNA-damaging agents. [provided by RefSeq, Jul 2008],



Western Blot analysis of various cells using XRCC2 Polyclonal Antibody diluted at 1:2000. Secondary antibody(catalog#:RS0002) was diluted at 1:20000 cells nucleus extracted by Minute TM Cytoplasmic and Nuclear Fractionation kit (SC-003, Invent biotech, MN, US



Immunohistochemistry analysis of paraffin-embedded human lung carcinoma, using XRCC2 Antibody. The picture on the right is blocked with the synthesized peptide.



Explore. Bioreagents.

www.biorbyt.com