

XRCC1 rabbit pAb

Cat#: orb766588 (Manual)

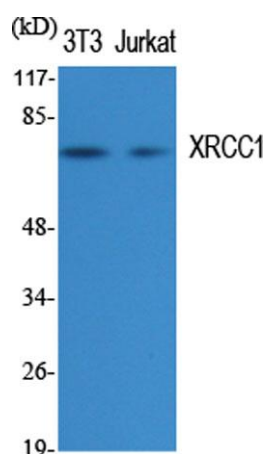
For research use only. Not intended for diagnostic use.

Product Name	XRCC1 rabbit pAb
Host species	Rabbit
Applications	WB;IHC;IF;ELISA
Species Cross-Reactivity	Human;Mouse;Rat
Recommended dilutions	Western Blot: 1/500 - 1/2000. Immunohistochemistry: 1/100 - 1/300. ELISA: 1/10000. Not yet tested in other applications.
Immunogen	The antiserum was produced against synthesized peptide derived from human XRCC1. AA range:517-566
Specificity	XRCC1 Polyclonal Antibody detects endogenous levels of XRCC1 protein.
Formulation	Liquid in PBS containing 50% glycerol, 0.5% BSA and 0.02% sodium azide..
Storage	Store at -20°C. Avoid repeated freeze-thaw cycles.
Protein Name	DNA repair protein XRCC1
Gene Name	XRCC1
Cellular localization	Nucleus . Moves from the nucleoli to the global nuclear chromatin upon DNA damage. .
Purification	The antibody was affinity-purified from rabbit antiserum by affinity-chromatography using epitope-specific immunogen.
Clonality	Polyclonal

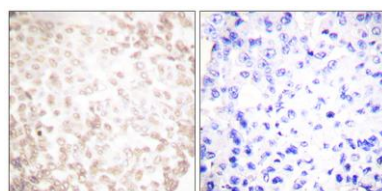
Concentration	1 mg/ml
Observed band	70kD
Human Gene ID	7515
Human Swiss-Prot Number	P18887
Alternative Names	XRCC1; DNA repair protein XRCC1; X-ray repair cross-complementing protein 1

Background

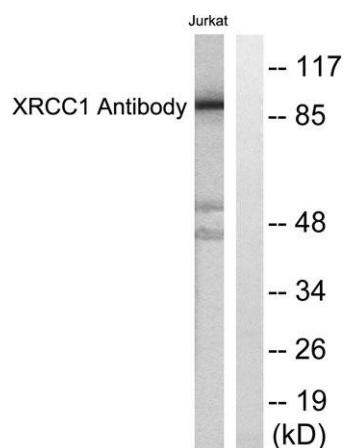
The protein encoded by this gene is involved in the efficient repair of DNA single-strand breaks formed by exposure to ionizing radiation and alkylating agents. This protein interacts with DNA ligase III, polymerase beta and poly (ADP-ribose) polymerase to participate in the base excision repair pathway. It may play a role in DNA processing during meiosis and recombination in germ cells. A rare microsatellite polymorphism in this gene is associated with cancer in patients of varying radiosensitivity. [provided by RefSeq, Jul 2008],



Western Blot analysis of various cells using XRCC1 Polyclonal Antibody diluted at 1:1000. Secondary antibody(catalog#:RS0002) was diluted at 1:20000 cells nucleus extracted by Minute TM Cytoplasmic and Nuclear Fractionation kit (SC-003, Invent biotech, MN, US



Immunohistochemistry analysis of paraffin-embedded human lung carcinoma tissue, using XRCC1 Antibody. The picture on the right is blocked with the synthesized peptide.



Western blot analysis of lysates from Jurkat cells, using XRCC1 Antibody. The lane on the right is blocked with the synthesized peptide.