

## XPA rabbit pAb

**Cat#: orb766585 (Manual)**

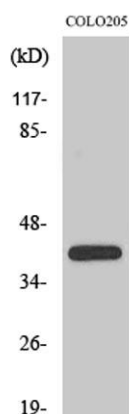
For research use only. Not intended for diagnostic use.

|                                 |  |
|---------------------------------|--|
| <b>Product Name</b>             | XPA rabbit pAb   |
| <b>Host species</b>             | Rabbit   |
| <b>Applications</b>             | WB;IHC;IF;ELISA  |
| <b>Species Cross-Reactivity</b> | Human;Mouse  |
| <b>Recommended dilutions</b>    | Western Blot: 1/500 - 1/2000. Immunohistochemistry: 1/100 - 1/300. ELISA: 1/10000. Not yet tested in other applications. |
| <b>Immunogen</b>                | The antiserum was produced against synthesized peptide derived from human XPA. AA range:211-260                          |
| <b>Specificity</b>              | XPA Polyclonal Antibody detects endogenous levels of XPA protein.  |
| <b>Formulation</b>              | Liquid in PBS containing 50% glycerol, 0.5% BSA and 0.02% sodium azide..   |
| <b>Storage</b>                  | Store at -20°C. Avoid repeated freeze-thaw cycles.   |
| <b>Protein Name</b>             | DNA repair protein complementing XP-A cells  |
| <b>Gene Name</b>                | XPA  |
| <b>Cellular localization</b>    | Nucleus .  |
| <b>Purification</b>             | The antibody was affinity-purified from rabbit antiserum by affinity-chromatography using epitope-specific immunogen.    |
| <b>Clonality</b>                | Polyclonal   |

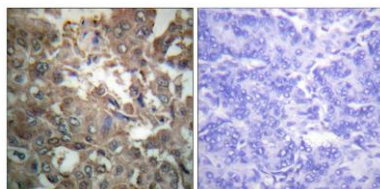
|                                |   |
|--------------------------------|---|
| <b>Concentration</b>           | 1 mg/ml   |
| <b>Observed band</b>           | 40kD  |
| <b>Human Gene ID</b>           | 7507  |
| <b>Human Swiss-Prot Number</b> | P23025  |
| <b>Alternative Names</b>       | XPA; XPAC; DNA repair protein complementing XP-A cells; Xeroderma pigmentosum group A-complementing protein |

### Background

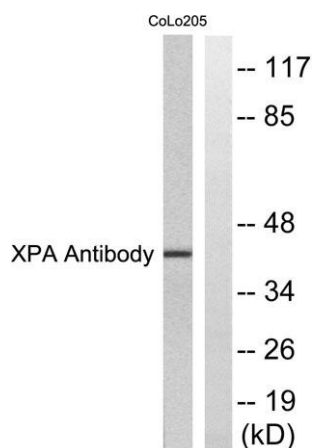
This gene encodes a zinc finger protein involved in DNA excision repair. The encoded protein is part of the NER (nucleotide excision repair) complex which is responsible for repair of UV radiation-induced photoproducts and DNA adducts induced by chemical carcinogens. Mutations in this gene are associated with xeroderma pigmentosum complementation group A. Alternatively spliced transcript variants have been found for this gene. [provided by RefSeq, Mar 2009],



**Western Blot analysis of various cells using XPA Polyclonal Antibody diluted at 1:500. Secondary antibody(catalog#:RS0002) was diluted at 1:20000 cells nucleus extracted by Minute TM Cytoplasmic and Nuclear Fractionation kit (SC-003, Invent biotech, MN, USA).**



**Immunohistochemistry analysis of paraffin-embedded human breast carcinoma tissue, using XPA Antibody. The picture on the right is blocked with the synthesized peptide.**



**Western blot analysis of lysates from COLO205 cells, using XPA Antibody. The lane on the right is blocked with the synthesized peptide.**