

V-ATPase B1 rabbit pAb**Cat#: orb766563 (Manual)**

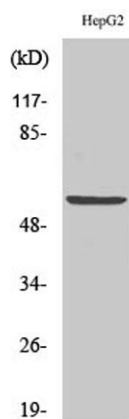
For research use only. Not intended for diagnostic use.

Product Name	V-ATPase B1 rabbit pAb
Host species	Rabbit
Applications	WB;IHC;IF;ELISA
Species Cross-Reactivity	Human;Mouse
Recommended dilutions	Western Blot: 1/500 - 1/2000. Immunohistochemistry: 1/100 - 1/300. ELISA: 1/5000. Not yet tested in other applications.
Immunogen	The antiserum was produced against synthesized peptide derived from human ATP6V1B1. AA range:381-430
Specificity	V-ATPase B1 Polyclonal Antibody detects endogenous levels of V-ATPase B1 protein.
Formulation	Liquid in PBS containing 50% glycerol, 0.5% BSA and 0.02% sodium azide..
Storage	Store at -20°C. Avoid repeated freeze-thaw cycles.
Protein Name	V-type proton ATPase subunit B kidney isoform
Gene Name	ATP6V1B1
Cellular localization	Apical cell membrane . Basolateral cell membrane .
Purification	The antibody was affinity-purified from rabbit antiserum by affinity-chromatography using epitope-specific immunogen.
Clonality	Polyclonal

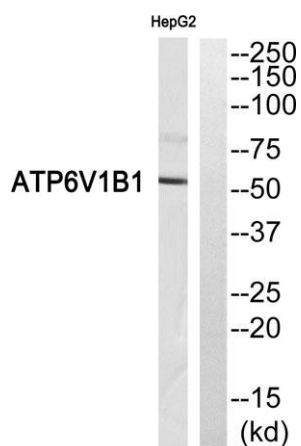
Concentration	1 mg/ml
Observed band	60kD
Human Gene ID	525
Human Swiss-Prot Number	P15313
Alternative Names	ATP6V1B1; ATP6B1; VATB; VPP3; V-type proton ATPase subunit B; kidney isoform; V-ATPase subunit B 1; Endomembrane proton pump 58 kDa subunit; Vacuolar proton pump subunit B 1

Background

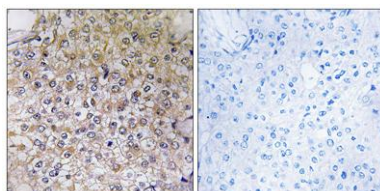
This gene encodes a component of vacuolar ATPase (V-ATPase), a multisubunit enzyme that mediates acidification of eukaryotic intracellular organelles. V-ATPase dependent organelle acidification is necessary for such intracellular processes as protein sorting, zymogen activation, receptor-mediated endocytosis, and synaptic vesicle proton gradient generation. V-ATPase is composed of a cytosolic V1 domain and a transmembrane V0 domain. The V1 domain consists of three A and three B subunits, two G subunits plus the C, D, E, F, and H subunits. The V1 domain contains the ATP catalytic site. The V0 domain consists of five different subunits: a, c, c', c'', and d. Additional isoforms of many of the V1 and V0 subunit proteins are encoded by multiple genes or alternatively spliced transcript variants. This encoded protein is one of two V1 domain B subunit isoforms and is found i



Western Blot analysis of various cells using V-ATPase B1 Polyclonal Antibody. Secondary antibody(catalog#:RS0002) was diluted at 1:20000



Western blot analysis of ATP6V1B1 Antibody. The lane on the right is blocked with the ATP6V1B1 peptide.



Immunohistochemistry analysis of paraffin-embedded human breast carcinoma, using ATP6V1B1 Antibody. The lane on the right is blocked with the ATP6V1B1 peptide.