

## UTP14A rabbit pAb

**Cat#: orb766557 (Manual)**

For research use only. Not intended for diagnostic use.

<b>Product Name</b>	UTP14A rabbit pAb
<b>Host species</b>	Rabbit
<b>Applications</b>	WB;IHC;IF;ELISA
<b>Species Cross-Reactivity</b>	Human;Mouse
<b>Recommended dilutions</b>	Western Blot: 1/500 - 1/2000. Immunohistochemistry: 1/100 - 1/300. Immunofluorescence: 1/200 - 1/1000. ELISA: 1/20000. Not yet tested in other applications.
<b>Immunogen</b>	The antiserum was produced against synthesized peptide derived from human UTP14A. AA range:321-370
<b>Specificity</b>	UTP14A Polyclonal Antibody detects endogenous levels of UTP14A protein.
<b>Formulation</b>	Liquid in PBS containing 50% glycerol, 0.5% BSA and 0.02% sodium azide..
<b>Storage</b>	Store at -20°C. Avoid repeated freeze-thaw cycles.
<b>Protein Name</b>	U3 small nucleolar RNA-associated protein 14 homolog A
<b>Gene Name</b>	UTP14A
<b>Cellular localization</b>	Nucleus, nucleolus .
<b>Purification</b>	The antibody was affinity-purified from rabbit antiserum by affinity-chromatography using epitope-specific immunogen.
<b>Clonality</b>	Polyclonal

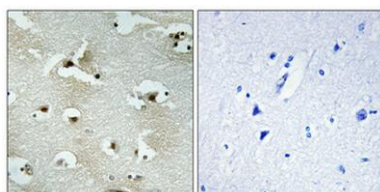
<b>Concentration</b>	1 mg/ml
<b>Observed band</b>	85kD
<b>Human Gene ID</b>	10813
<b>Human Swiss-Prot Number</b>	Q9BVJ6
<b>Alternative Names</b>	UTP14A; SDCCAG16; U3 small nucleolar RNA-associated protein 14 homolog A; Antigen NY-CO-16; Serologically defined colon cancer antigen 16

### Background

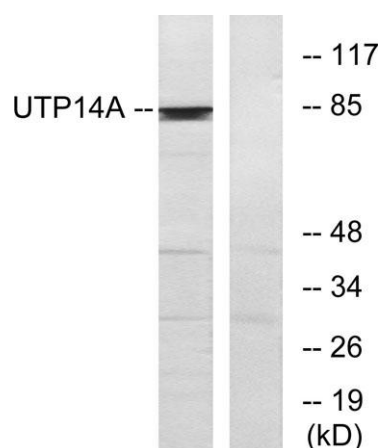
This gene encodes a member of the uridine triphosphate 14 family. As an essential component of a large ribonucleoprotein complex bound to the U3 small nucleolar RNA, the encoded protein is involved in ribosome biogenesis and 18S rRNA synthesis. An autosomal retrotransposed copy of this X-linked gene exists on chromosome 13. Alternative splicing results in multiple transcript variants.[provided by RefSeq, Oct 2009],



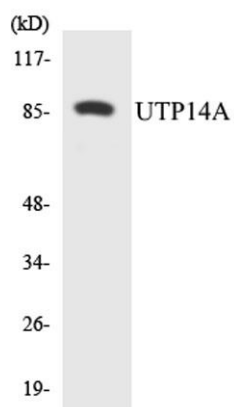
**Western Blot analysis of various cells using UTP14A Polyclonal Antibody diluted at 1:500. Secondary antibody(catalog#:RS0002) was diluted at 1:20000 cells nucleus extracted by Minute TM Cytoplasmic and Nuclear Fractionation kit (SC-003, Invent biotech, MN, USA).**



**Immunohistochemical analysis of paraffin-embedded Human brain. Antibody was diluted at 1:100(4° overnight). High-pressure and temperature Tris-EDTA, pH8.0 was used for antigen retrieval. Negative contrl (right) obtained from antibody was pre-absorbed by immunogen peptide.**



**Western blot analysis of lysates from HeLa cells, using UTP14A Antibody. The lane on the right is blocked with the synthesized peptide.**



**Western blot analysis of the lysates from 293 cells using UTP14A antibody.**