

USF-2 rabbit pAb

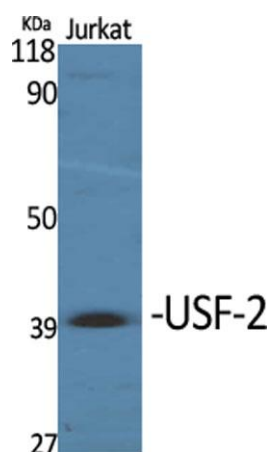
Cat#: orb766552 (Manual)

For research use only. Not intended for diagnostic use.

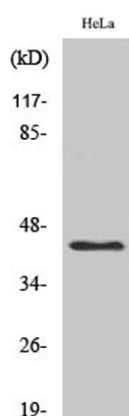
Product Name	USF-2 rabbit pAb
Host species	Rabbit
Applications	WB;IHC;IF;ELISA
Species Cross-Reactivity	Human;Mouse;Rat
Recommended dilutions	Western Blot: 1/500 - 1/2000. Immunohistochemistry: 1/100 - 1/300. ELISA: 1/20000. Not yet tested in other applications.
Immunogen	The antiserum was produced against synthesized peptide derived from human USF2. AA range:196-245
Specificity	USF-2 Polyclonal Antibody detects endogenous levels of USF-2 protein.
Formulation	Liquid in PBS containing 50% glycerol, 0.5% BSA and 0.02% sodium azide..
Storage	Store at -20°C. Avoid repeated freeze-thaw cycles.
Protein Name	Upstream stimulatory factor 2
Gene Name	USF2
Cellular localization	Nucleus.
Purification	The antibody was affinity-purified from rabbit antiserum by affinity-chromatography using epitope-specific immunogen.
Clonality	Polyclonal

Concentration	1 mg/ml
Observed band	40kD
Human Gene ID	7392
Human Swiss-Prot Number	Q15853
Alternative Names	USF2; BHLHB12; Upstream stimulatory factor 2; Class B basic helix-loop-helix protein 12; bHLHb12; FOS-interacting protein; FIP; Major late transcription factor 2; Upstream transcription factor 2

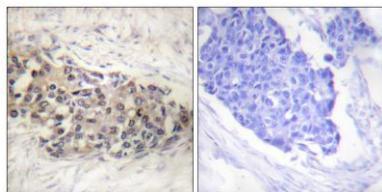
Background This gene encodes a member of the basic helix-loop-helix leucine zipper family of transcription factors. The encoded protein can activate transcription through pyrimidine-rich initiator (Inr) elements and E-box motifs and is involved in regulating multiple cellular processes. [provided by RefSeq, Mar 2016],



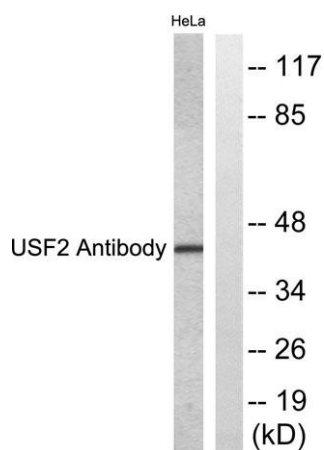
Western Blot analysis of various cells using USF-2 Polyclonal Antibody. Secondary antibody(catalog#:RS0002) was diluted at 1:20000 cells nucleus extracted by Minute TM Cytoplasmic and Nuclear Fractionation kit (SC-003, Invent biotech, MN, USA).



Western Blot analysis of HeLa cells using USF-2 Polyclonal Antibody. Secondary antibody(catalog#:RS0002) was diluted at 1:20000 cells nucleus extracted by Minute TM Cytoplasmic and Nuclear Fractionation kit (SC-003, Invent biotech, MN, USA).



Immunohistochemistry analysis of paraffin-embedded human breast carcinoma tissue, using USF2 Antibody. The picture on the right is blocked with the synthesized peptide.



Western blot analysis of lysates from HeLa cells, using USF2 Antibody. The lane on the right is blocked with the synthesized peptide.