

## UBA2 rabbit pAb

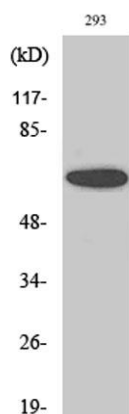
**Cat#: orb766536 (Manual)**

For research use only. Not intended for diagnostic use.

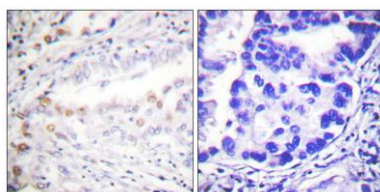
<b>Product Name</b>	UBA2 rabbit pAb
<b>Host species</b>	Rabbit
<b>Applications</b>	WB;IHC;IF;ELISA
<b>Species Cross-Reactivity</b>	Human;Rat;Mouse;
<b>Recommended dilutions</b>	Western Blot: 1/500 - 1/2000. Immunohistochemistry: 1/100 - 1/300. Immunofluorescence: 1/200 - 1/1000. ELISA: 1/10000. Not yet tested in other applications.
<b>Immunogen</b>	The antiserum was produced against synthesized peptide derived from human Uba2. AA range:591-640
<b>Specificity</b>	UBA2 Polyclonal Antibody detects endogenous levels of UBA2 protein.
<b>Formulation</b>	Liquid in PBS containing 50% glycerol, 0.5% BSA and 0.02% sodium azide..
<b>Storage</b>	Store at -20°C. Avoid repeated freeze-thaw cycles.
<b>Protein Name</b>	SUMO-activating enzyme subunit 2
<b>Gene Name</b>	UBA2
<b>Cellular localization</b>	Cytoplasm. Nucleus. Shuttles between the cytoplasm and the nucleus, sumoylation is required either for nuclear translocation or nuclear retention.
<b>Purification</b>	The antibody was affinity-purified from rabbit antiserum by affinity-chromatography using epitope-specific immunogen.
<b>Clonality</b>	Polyclonal

<b>Concentration</b>	1 mg/ml
<b>Observed band</b>	71kD
<b>Human Gene ID</b>	10054
<b>Human Swiss-Prot Number</b>	Q9UBT2
<b>Alternative Names</b>	UBA2; SAE2; UBLE1B; HRIHFB2115; SUMO-activating enzyme subunit 2; Anthracycline-associated resistance ARX; Ubiquitin-like 1-activating enzyme E1B

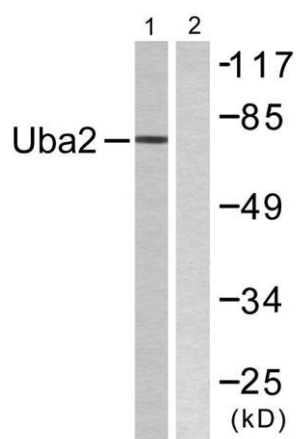
**Background** Posttranslational modification of proteins by the addition of the small protein SUMO (see SUMO1; MIM 601912), or sumoylation, regulates protein structure and intracellular localization. SAE1 (MIM 613294) and UBA2 form a heterodimer that functions as a SUMO-activating enzyme for the sumoylation of proteins (Okuma et al., 1999 [PubMed 9920803]).[supplied by OMIM, Mar 2010],



Western Blot analysis of various cells using UBA2 Polyclonal Antibody. Secondary antibody(catalog#:RS0002) was diluted at 1:20000 cells nucleus extracted by Minute TM Cytoplasmic and Nuclear Fractionation kit (SC-003, Invent biotech, MN, USA).



Immunohistochemistry analysis of paraffin-embedded human lung carcinoma tissue, using Uba2 Antibody. The picture on the right is blocked with the synthesized peptide.



**Western blot analysis of lysates from 293 cells, treated with UV 5', using Uba2 Antibody. The lane on the right is blocked with the synthesized peptide.**