

**Ub rabbit pAb****Cat#: orb766535 (Manual)**

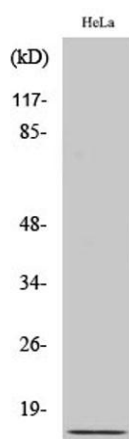
For research use only. Not intended for diagnostic use.

<b>Product Name</b>	Ub rabbit pAb
<b>Host species</b>	Rabbit
<b>Applications</b>	WB;IP;IHC;IF;ELISA
<b>Species Cross-Reactivity</b>	Human;Mouse;Rat
<b>Recommended dilutions</b>	Western Blot: 1/500 - 1/2000. Immunohistochemistry: 1/100 - 1/300. ELISA: 1/20000. Not yet tested in other applications.
<b>Immunogen</b>	The antiserum was produced against synthesized peptide derived from human Ubiquitin. AA range:40-89
<b>Specificity</b>	Ub Polyclonal Antibody detects endogenous levels of Ub protein.
<b>Formulation</b>	Liquid in PBS containing 50% glycerol, 0.5% BSA and 0.02% sodium azide..
<b>Storage</b>	Store at -20°C. Avoid repeated freeze-thaw cycles.
<b>Protein Name</b>	Ubiquitin
<b>Gene Name</b>	UBA52/RPS27A/UBB/UBC
<b>Cellular localization</b>	[Ubiquitin]: Cytoplasm . Nucleus . Mitochondrion outer membrane ; Peripheral membrane protein .
<b>Purification</b>	The antibody was affinity-purified from rabbit antiserum by affinity-chromatography using epitope-specific immunogen.
<b>Clonality</b>	Polyclonal

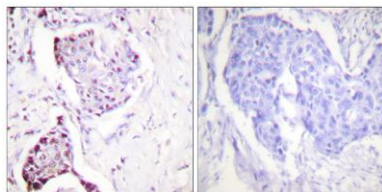
<b>Concentration</b>	1 mg/ml
<b>Observed band</b>	
<b>Human Gene ID</b>	7311
<b>Human Swiss-Prot Number</b>	P0CG47/P0CG48/P62979/P62987
<b>Alternative Names</b>	UBB; Polyubiquitin-B; UBC; Polyubiquitin-C; RPS27A; UBA80; UBCEP1; Ubiquitin-40S ribosomal protein S27a; Ubiquitin carboxyl extension protein 80; UBA52; UBCEP2; Ubiquitin-60S ribosomal protein L40; CEP52; Ubiquitin A-52 residue ribosomal pr

**Background**

This gene encodes ubiquitin, one of the most conserved proteins known. Ubiquitin has a major role in targeting cellular proteins for degradation by the 26S proteasome. It is also involved in the maintenance of chromatin structure, the regulation of gene expression, and the stress response. Ubiquitin is synthesized as a precursor protein consisting of either polyubiquitin chains or a single ubiquitin moiety fused to an unrelated protein. This gene consists of three direct repeats of the ubiquitin coding sequence with no spacer sequence. Consequently, the protein is expressed as a polyubiquitin precursor with a final amino acid after the last repeat. An aberrant form of this protein has been detected in patients with Alzheimer's disease and Down syndrome. Pseudogenes of this gene are located on chromosomes 1, 2, 13, and 17. Alternative splicing results in multiple transcript variants. [provided by RefSeq]



**Western Blot analysis of various cells using Ub Polyclonal Antibody. Secondary antibody(catalog#:RS0002) was diluted at 1:20000**



**Immunohistochemistry analysis of paraffin-embedded human breast carcinoma tissue, using Ubiquitin Antibody. The picture on the right is blocked with the synthesized peptide.**