

TLK2 rabbit pAb

Cat#: orb766492 (Manual)

For research use only. Not intended for diagnostic use.

| | |
|---------------------------------|---|
| Product Name | TLK2 rabbit pAb |
| Host species | Rabbit |
| Applications | WB;ELISA;IHC |
| Species Cross-Reactivity | Human;Mouse |
| Recommended dilutions | WB 1:500-2000;IHC-p 1:50-300; ELISA 2000-20000 |
| Immunogen | The antiserum was produced against synthesized peptide derived from human TLK2. AA range:191-240 |
| Specificity | TLK2 Polyclonal Antibody detects endogenous levels of TLK2 protein. |
| Formulation | Liquid in PBS containing 50% glycerol, 0.5% BSA and 0.02% sodium azide.. |
| Storage | Store at -20°C. Avoid repeated freeze-thaw cycles. |
| Protein Name | Serine/threonine-protein kinase tousled-like 2 |
| Gene Name | TLK2 |
| Cellular localization | Nucleus. Cytoplasm, perinuclear region. Cytoplasm, cytoskeleton. Colocalizes with the cytoplasmic intermediate filament system during the G1 phase of the cell cycle. Present in the perinuclear region at S phase and in the nucleus at late G2. |
| Purification | The antibody was affinity-purified from rabbit antiserum by affinity-chromatography using epitope-specific immunogen. |

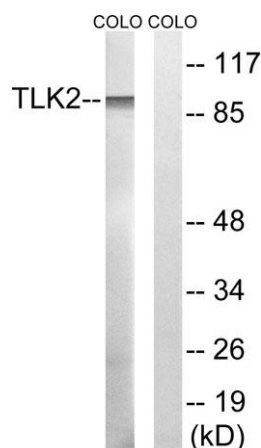
| | |
|--------------------------------|---|
| Clonality | Polyclonal |
| Concentration | 1 mg/ml |
| Observed band | 90kD |
| Human Gene ID | 11011 |
| Human Swiss-Prot Number | Q86UE8 |
| Alternative Names | TLK2; Serine/threonine-protein kinase tousled-like 2; HsHPK; PKU-alpha; Tousled-like kinase 2 |

Background

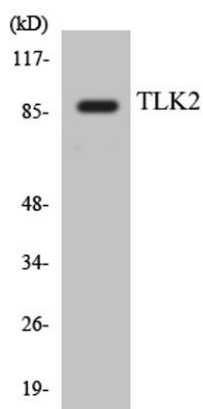
This gene encodes a nuclear serine/threonine kinase that was first identified in Arabidopsis. The encoded protein is thought to function in the regulation of chromatin assembly in the S phase of the cell cycle by regulating the levels of a histone H3/H4 chaperone. This protein is associated with double-strand break repair of DNA damage caused by radiation. Pseudogenes of this gene are present on chromosomes 10 and 17. Alternate splicing results in multiple transcript variants. [provided by RefSeq, Sep 2013],



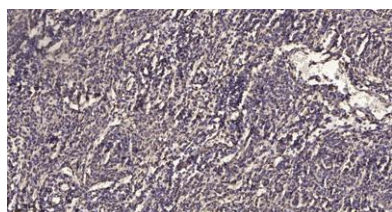
Western Blot analysis of various cells using TLK2 Polyclonal Antibody. Secondary antibody(catalog#:RS0002) was diluted at 1:20000 cells nucleus extracted by Minute TM Cytoplasmic and Nuclear Fractionation kit (SC-003, Invent biotech, MN, USA).



Western blot analysis of lysates from COLO cells, using TLK2 Antibody. The lane on the right is blocked with the synthesized peptide.



Western blot analysis of the lysates from HeLa cells using TLK2 antibody.



Immunohistochemical analysis of paraffin-embedded human meningioma. 1, Antibody was diluted at 1:200(4° overnight). 2, Tris-EDTA,pH9.0 was used for antigen retrieval. 3,Secondary antibody was diluted at 1:200(room temperature, 45min).