

TLE4 rabbit pAb

Cat#: orb766490 (Manual)

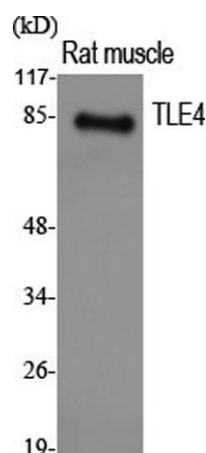
For research use only. Not intended for diagnostic use.

Product Name	TLE4 rabbit pAb
Host species	Rabbit
Applications	WB;IHC;IF;ELISA
Species Cross-Reactivity	Human;Mouse;Rat
Recommended dilutions	Western Blot: 1/500 - 1/2000. Immunohistochemistry: 1/100 - 1/300. ELISA: 1/20000. Not yet tested in other applications.
Immunogen	The antiserum was produced against synthesized peptide derived from human TLE4. AA range:161-210
Specificity	TLE4 Polyclonal Antibody detects endogenous levels of TLE4 protein.
Formulation	Liquid in PBS containing 50% glycerol, 0.5% BSA and 0.02% sodium azide..
Storage	Store at -20°C. Avoid repeated freeze-thaw cycles.
Protein Name	Transducin-like enhancer protein 4
Gene Name	TLE4
Cellular localization	Nucleus.
Purification	The antibody was affinity-purified from rabbit antiserum by affinity-chromatography using epitope-specific immunogen.
Clonality	Polyclonal

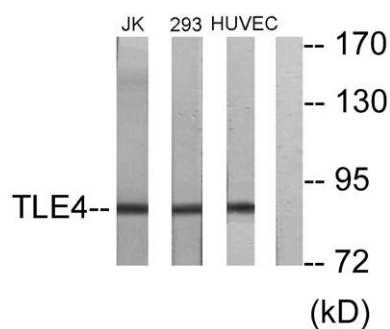
Concentration	1 mg/ml
Observed band	83kD
Human Gene ID	7091
Human Swiss-Prot Number	Q04727
Alternative Names	TLE4; KIAA1261; Transducin-like enhancer protein 4

Background

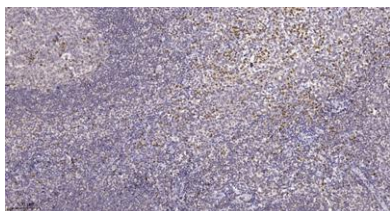
caution:Product of a dubious CDS prediction. Found in the 3'UTR of TLE4. No homolog. Large scale identification of a phosphorylated peptide (PubMed:15302935) would require further confirmation.,function:Transcriptional corepressor that binds to a number of transcription factors. Inhibits the transcriptional activation mediated by PAX5, and by CTNNB1 and TCF family members in Wnt signaling. The effects of full-length TLE family members may be modulated by association with dominant-negative AES.,similarity:Belongs to the WD repeat Groucho/TLE family.,similarity:Contains 7 WD repeats.,subunit:Homooligomer and heterooligomer with other family members. Binds PAX5, LEF1, TCF7, TCF7L1 and TCF7L2.,tissue specificity:In all tissues examined, mostly in brain, and muscle.,



Western Blot analysis of various cells using TLE4 Polyclonal Antibody. Secondary antibody(catalog#:RS0002) was diluted at 1:20000 cells nucleus extracted by Minute TM Cytoplasmic and Nuclear Fractionation kit (SC-003,Inventbiotech,MN,USA).



Western blot analysis of lysates from Jurkat, 293, and HUVEC cells, using TLE4 Antibody. The lane on the right is blocked with the synthesized peptide.



Immunohistochemical analysis of paraffin-embedded human tonsil. 1, Tris-EDTA, pH 9.0 was used for antigen retrieval. 2 Antibody was diluted at 1:200 (4°C overnight). 3, Secondary antibody was diluted at 1:200 (room temperature, 45 min).