

TIS11B rabbit pAb**Cat#: orb766488 (Manual)**

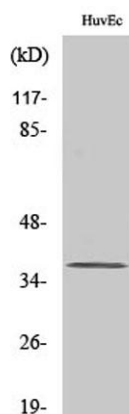
For research use only. Not intended for diagnostic use.

Product Name	TIS11B rabbit pAb
Host species	Rabbit
Applications	WB;IHC;IF;ELISA
Species Cross-Reactivity	Human;Mouse;Rat
Recommended dilutions	Western Blot: 1/500 - 1/2000. Immunohistochemistry: 1/100 - 1/300. ELISA: 1/10000. Not yet tested in other applications.
Immunogen	The antiserum was produced against synthesized peptide derived from human TISB. AA range:58-107
Specificity	TIS11B Polyclonal Antibody detects endogenous levels of TIS11B protein.
Formulation	Liquid in PBS containing 50% glycerol, 0.5% BSA and 0.02% sodium azide..
Storage	Store at -20°C. Avoid repeated freeze-thaw cycles.
Protein Name	Zinc finger protein 36 C3H1 type-like 1
Gene Name	ZFP36L1
Cellular localization	Nucleus . Cytoplasm . Cytoplasmic granule . Cytoplasm, P-body . Shuttles between the nucleus and the cytoplasm in a XPO1/CRM1-dependent manner (By similarity). Component of cytoplasmic stress granules (PubMed:15967811). Localizes in processing bodies (PBs) (PubMed:17369404). .
Purification	The antibody was affinity-purified from rabbit antiserum by affinity-chromatography using epitope-specific immunogen.

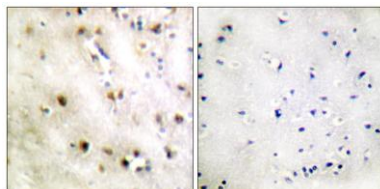
Clonality	Polyclonal
Concentration	1 mg/ml
Observed band	36kD
Human Gene ID	677
Human Swiss-Prot Number	Q07352
Alternative Names	ZFP36L1; BERG36; BRF1; ERF1; RNF162B; TIS11B; Zinc finger protein 36; C3H1 type-like 1; Butyrate response factor 1; EGF-response factor 1; ERF-1; Protein TIS11B

Background

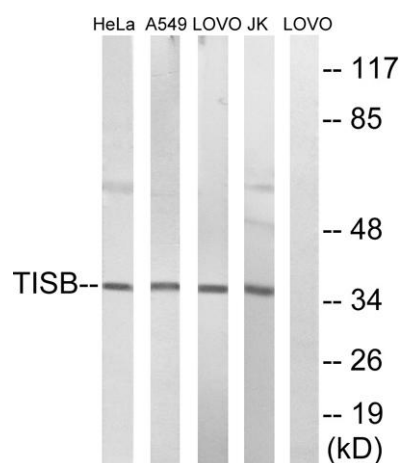
This gene is a member of the TIS11 family of early response genes, which are induced by various agonists such as the phorbol ester TPA and the polypeptide mitogen EGF. This gene is well conserved across species and has a promoter that contains motifs seen in other early-response genes. The encoded protein contains a distinguishing putative zinc finger domain with a repeating cys-his motif. This putative nuclear transcription factor most likely functions in regulating the response to growth factors. Alternatively spliced transcript variants encoding different isoforms have been found for this gene. [provided by RefSeq, Sep 2011],



Western Blot analysis of various cells using TIS11B Polyclonal Antibody. Secondary antibody(catalog#:RS0002) was diluted at 1:20000



Immunohistochemistry analysis of paraffin-embedded human brain tissue, using TISB Antibody. The picture on the right is blocked with the synthesized peptide.



Western blot analysis of lysates from Jurkat, HeLa, A549, and LOVO cells, using TISB Antibody. The lane on the right is blocked with the synthesized peptide.