

TFIIIC110 rabbit pAb**Cat#: orb766465 (Manual)**

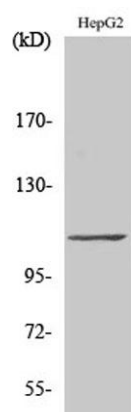
For research use only. Not intended for diagnostic use.

Product Name	TFIIIC110 rabbit pAb
Host species	Rabbit
Applications	WB;IHC;IF;ELISA
Species Cross-Reactivity	Human;Rat;Mouse;
Recommended dilutions	Western Blot: 1/500 - 1/2000. Immunohistochemistry: 1/100 - 1/300. ELISA: 1/20000. Not yet tested in other applications.
Immunogen	The antiserum was produced against synthesized peptide derived from human TF3C2. AA range:71-120
Specificity	TFIIIC110 Polyclonal Antibody detects endogenous levels of TFIIIC110 protein.
Formulation	Liquid in PBS containing 50% glycerol, 0.5% BSA and 0.02% sodium azide..
Storage	Store at -20°C. Avoid repeated freeze-thaw cycles.
Protein Name	General transcription factor 3C polypeptide 2
Gene Name	GTF3C2
Cellular localization	Nucleus.
Purification	The antibody was affinity-purified from rabbit antiserum by affinity-chromatography using epitope-specific immunogen.
Clonality	Polyclonal

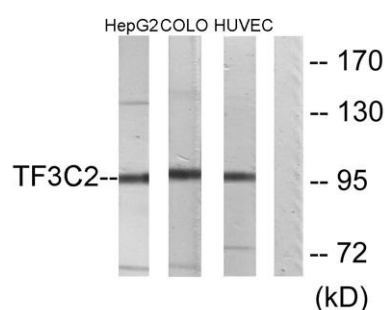
Concentration	1 mg/ml
Observed band	100kD
Human Gene ID	2976
Human Swiss-Prot Number	Q8WUA4
Alternative Names	GTF3C2; KIAA0011; General transcription factor 3C polypeptide 2; TF3C-beta; Transcription factor IIIC 110 kDa subunit; TFIIC 110 kDa subunit; TFIIC110; Transcription factor IIIC subunit beta

Background

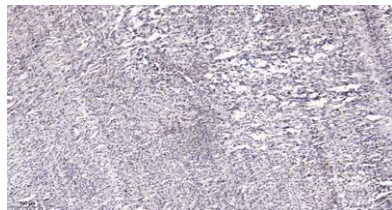
function:Required for RNA polymerase III-mediated transcription. Component of TFIIC that initiates transcription complex assembly on tRNA and is required for transcription of 5S rRNA and other stable nuclear and cytoplasmic RNAs. May play a direct role in stabilizing interactions of TFIIC2 with TFIIC1.,similarity:Contains 4 WD repeats.,subunit:Part of the TFIIC subcomplex TFIIC2, consisting of six subunits, GTF3C1, GTF3C2, GTF3C3, GTF3C4, GTF3C5 and GTF3C6.,



Western Blot analysis of various cells using TFIIC110 Polyclonal Antibody



Western blot analysis of lysates from HepG2, COLO205, and HUVEC cells, using TF3C2 Antibody. The lane on the right is blocked with the synthesized peptide.



Immunohistochemical analysis of paraffin-embedded human Small intestinal stromal tumor. 1, Tris-EDTA, pH9.0 was used for antigen retrieval. 2 Antibody was diluted at 1:200 (4° overnight). 3, Secondary antibody was diluted at 1:200 (room temperature, 45min).