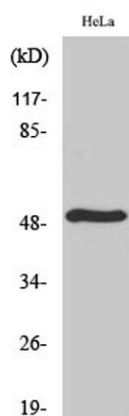


TDE2L rabbit pAb**Cat#: orb766453 (Manual)**

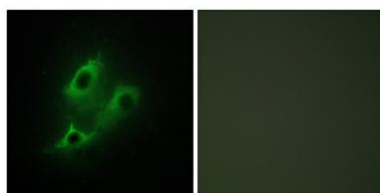
For research use only. Not intended for diagnostic use.

| | |
|---------------------------------|--|
| Product Name | TDE2L rabbit pAb |
| Host species | Rabbit |
| Applications | WB;IHC;IF;ELISA |
| Species Cross-Reactivity | Human;Mouse;Rat |
| Recommended dilutions | Western Blot: 1/500 - 1/2000. Immunohistochemistry: 1/100 - 1/300. Immunofluorescence: 1/200 - 1/1000. ELISA: 1/40000. Not yet tested in other applications. |
| Immunogen | The antiserum was produced against synthesized peptide derived from human SERC2. AA range:341-390 |
| Specificity | TDE2L Polyclonal Antibody detects endogenous levels of TDE2L protein. |
| Formulation | Liquid in PBS containing 50% glycerol, 0.5% BSA and 0.02% sodium azide.. |
| Storage | Store at -20°C. Avoid repeated freeze-thaw cycles. |
| Protein Name | Serine incorporator 2 |
| Gene Name | SERINC2 |
| Cellular localization | Membrane ; Multi-pass membrane protein . |
| Purification | The antibody was affinity-purified from rabbit antiserum by affinity-chromatography using epitope-specific immunogen. |
| Clonality | Polyclonal |

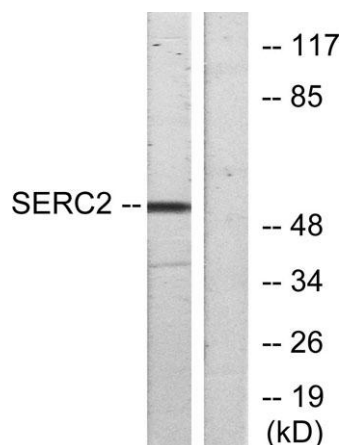
| | |
|--------------------------------|--|
| Concentration | 1 mg/ml |
| Observed band | 55kD |
| Human Gene ID | 347735 |
| Human Swiss-Prot Number | Q96SA4 |
| Alternative Names | SERINC2; TDE2L; FKSG84; Serine incorporator 2; Tumor differentially expressed protein 2-like |
| Background | similarity:Belongs to the TDE1 family., |



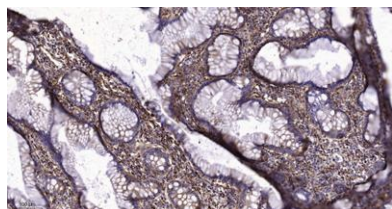
Western Blot analysis of various cells using TDE2L Polyclonal Antibody



Immunofluorescence analysis of NIH/3T3 cells, using SERC2 Antibody. The picture on the right is blocked with the synthesized peptide.



Western blot analysis of lysates from HeLa cells, using SERC2 Antibody. The lane on the right is blocked with the synthesized peptide.



Immunohistochemical analysis of paraffin-embedded human colon cancer. 1, Tris-EDTA, pH 9.0 was used for antigen retrieval. 2 Antibody was diluted at 1:200 (4° overnight). 3, Secondary antibody was diluted at 1:200 (room temperature, 45 min).