

TCP-1 ζ rabbit pAb**Cat#: orb766450 (Manual)**

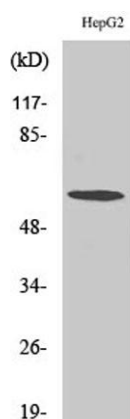
For research use only. Not intended for diagnostic use.

Product Name	TCP-1 ζ rabbit pAb
Host species	Rabbit
Applications	WB;IHC;IF;ELISA
Species Cross-Reactivity	Human;Mouse;Rat
Recommended dilutions	Western Blot: 1/500 - 1/2000. Immunohistochemistry: 1/100 - 1/300. ELISA: 1/10000. Not yet tested in other applications.
Immunogen	The antiserum was produced against synthesized peptide derived from human CCT6A. AA range:171-220
Specificity	TCP-1 ζ Polyclonal Antibody detects endogenous levels of TCP-1 ζ protein.
Formulation	Liquid in PBS containing 50% glycerol, 0.5% BSA and 0.02% sodium azide..
Storage	Store at -20°C. Avoid repeated freeze-thaw cycles.
Protein Name	T-complex protein 1 subunit zeta
Gene Name	CCT6A
Cellular localization	Cytoplasm .
Purification	The antibody was affinity-purified from rabbit antiserum by affinity-chromatography using epitope-specific immunogen.
Clonality	Polyclonal

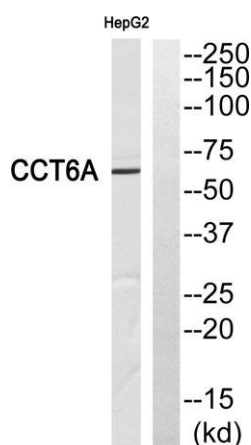
Concentration	1 mg/ml
Observed band	60kD
Human Gene ID	908
Human Swiss-Prot Number	P40227
Alternative Names	CCT6A; CCT6; CCTZ; T-complex protein 1 subunit zeta; TCP-1-zeta; Acute morphine dependence-related protein 2; CCT-zeta-1; HTR3; Tcp20

Background

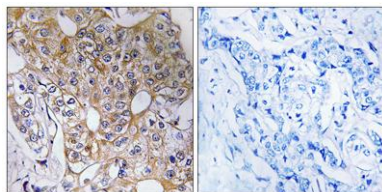
The protein encoded by this gene is a molecular chaperone that is a member of the chaperonin containing TCP1 complex (CCT), also known as the TCP1 ring complex (TRiC). This complex consists of two identical stacked rings, each containing eight different proteins. Unfolded polypeptides enter the central cavity of the complex and are folded in an ATP-dependent manner. The complex folds various proteins, including actin and tubulin. Alternate transcriptional splice variants of this gene, encoding different isoforms, have been characterized. In addition, several pseudogenes of this gene have been located. [provided by RefSeq, Jun 2010],



Western Blot analysis of various cells using TCP-1 ζ Polyclonal Antibody diluted at 1:500



Western blot analysis of CCT6A Antibody. The lane on the right is blocked with the CCT6A peptide.



Immunohistochemistry analysis of paraffin-embedded human breast carcinoma tissue, using CCT6A Antibody. The picture on the right is blocked with the synthesized peptide.