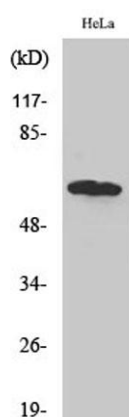


TBC1D3A/B/C rabbit pAb**Cat#: orb766439 (Manual)**

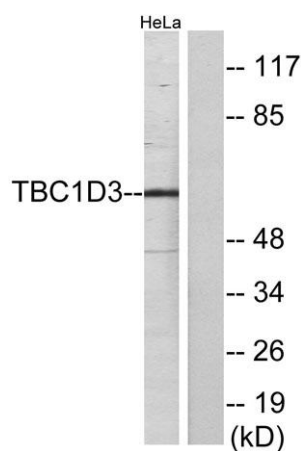
For research use only. Not intended for diagnostic use.

Product Name	TBC1D3A/B/C rabbit pAb
Host species	Rabbit
Applications	WB;IF;ELISA
Species Cross-Reactivity	Human;Rat;Mouse;
Recommended dilutions	Western Blot: 1/500 - 1/2000. ELISA: 1/20000. Not yet tested in other applications.
Immunogen	The antiserum was produced against synthesized peptide derived from human TBC1D3. AA range:481-530
Specificity	TBC1D3A/B/C Polyclonal Antibody detects endogenous levels of TBC1D3A/B/C protein.
Formulation	Liquid in PBS containing 50% glycerol, 0.5% BSA and 0.02% sodium azide..
Storage	Store at -20°C. Avoid repeated freeze-thaw cycles.
Protein Name	TBC1 domain family member 3
Gene Name	TBC1D3
Cellular localization	Cell membrane ; Lipid-anchor . Associated with lipid rafts.
Purification	The antibody was affinity-purified from rabbit antiserum by affinity-chromatography using epitope-specific immunogen.
Clonality	Polyclonal

Concentration	1 mg/ml
Observed band	62kD
Human Gene ID	414059/727735/84218/643947/414060/653380/654341/729873
Human Swiss-Prot Number	Q8IZP1/A6NDS4/Q6IPX1
Alternative Names	TBC1D3; PRC17; TBC1D3A; TBC1 domain family member 3; Prostate cancer gene 17 protein; Protein TRE17-alpha; Rab GTPase-activating protein PRC17; TBC1D3B; TBC1D3I; TBC1 domain family member 3B; TBC1D3C; TBC1D3D; TBC1 domain family member 3C
Background	This gene represents one of a cluster of related genes found on chromosome 17. The proteins encoded by this gene family contain a TBC (Tre-2, Bub2p, and Cdc16p) domain and may be involved in GTPase signaling and vesicle trafficking. [provided by RefSeq, Apr 2014],



Western Blot analysis of various cells using TBC1D3A/B/C Polyclonal Antibody



Western blot analysis of lysates from HeLa cells, using TBC1D3 Antibody. The lane on the right is blocked with the synthesized peptide.