

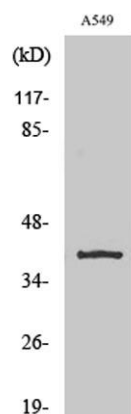
TASK-5 rabbit pAb**Cat#: orb766432 (Manual)**

For research use only. Not intended for diagnostic use.

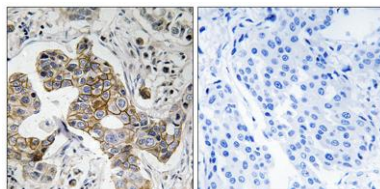
Product Name	TASK-5 rabbit pAb
Host species	Rabbit
Applications	WB;IHC;IF;ELISA
Species Cross-Reactivity	Human;Rat;Mouse;
Recommended dilutions	Western Blot: 1/500 - 1/2000. Immunohistochemistry: 1/100 - 1/300. ELISA: 1/20000. Not yet tested in other applications.
Immunogen	The antiserum was produced against synthesized peptide derived from human KCNK15. AA range:273-322
Specificity	TASK-5 Polyclonal Antibody detects endogenous levels of TASK-5 protein.
Formulation	Liquid in PBS containing 50% glycerol, 0.5% BSA and 0.02% sodium azide..
Storage	Store at -20°C. Avoid repeated freeze-thaw cycles.
Protein Name	Potassium channel subfamily K member 15
Gene Name	KCNK15
Cellular localization	Membrane; Multi-pass membrane protein.
Purification	The antibody was affinity-purified from rabbit antiserum by affinity-chromatography using epitope-specific immunogen.
Clonality	Polyclonal

Concentration	1 mg/ml
Observed band	42kD
Human Gene ID	60598
Human Swiss-Prot Number	Q9H427
Alternative Names	KCNK15; TASK5; Potassium channel subfamily K member 15; Acid-sensitive potassium channel protein TASK-5; TWIK-related acid-sensitive K(+) channel 5; Two pore potassium channel KT3.3; Two pore K(+) channel KT3.3

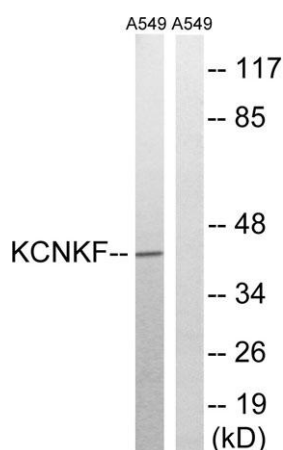
Background potassium two pore domain channel subfamily K member 15(KCNK15) Homo sapiens This gene encodes one of the members of the superfamily of potassium channel proteins containing two pore-forming P domains. The product of this gene has not been shown to be a functional channel, however, it may require other non-pore-forming proteins for activity. [provided by RefSeq, Jul 2008],



Western Blot analysis of various cells using TASK-5 Polyclonal Antibody diluted at 1:1000



Immunohistochemistry analysis of paraffin-embedded human breast carcinoma tissue, using KCNK15 Antibody. The picture on the right is blocked with the synthesized peptide.



Western blot analysis of lysates from A549 cells, using KCNK15 Antibody. The lane on the right is blocked with the synthesized peptide.