

**TAF5L rabbit pAb****Cat#: orb766429 (Manual)**

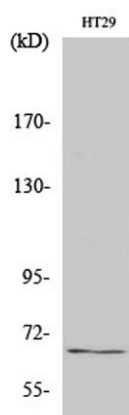
For research use only. Not intended for diagnostic use.

<b>Product Name</b>	TAF5L rabbit pAb
<b>Host species</b>	Rabbit
<b>Applications</b>	WB;IHC;IF;ELISA
<b>Species Cross-Reactivity</b>	Human;Monkey
<b>Recommended dilutions</b>	Western Blot: 1/500 - 1/2000. Immunohistochemistry: 1/100 - 1/300. ELISA: 1/10000. Not yet tested in other applications.
<b>Immunogen</b>	The antiserum was produced against synthesized peptide derived from human TAF5L. AA range:291-340
<b>Specificity</b>	TAF5L Polyclonal Antibody detects endogenous levels of TAF5L protein.
<b>Formulation</b>	Liquid in PBS containing 50% glycerol, 0.5% BSA and 0.02% sodium azide..
<b>Storage</b>	Store at -20°C. Avoid repeated freeze-thaw cycles.
<b>Protein Name</b>	TAF5-like RNA polymerase II p300/CBP-associated factor-associated factor 65 kDa subunit 5L
<b>Gene Name</b>	TAF5L
<b>Cellular localization</b>	Nucleus .
<b>Purification</b>	The antibody was affinity-purified from rabbit antiserum by affinity-chromatography using epitope-specific immunogen.
<b>Clonality</b>	Polyclonal

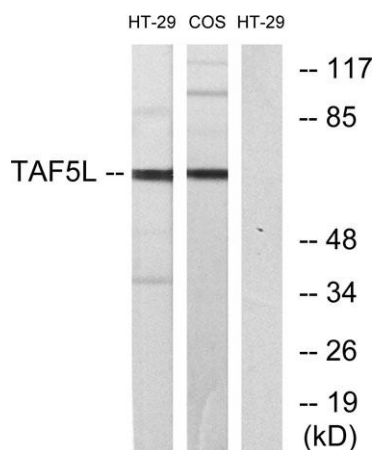
<b>Concentration</b>	1 mg/ml
<b>Observed band</b>	66kD
<b>Human Gene ID</b>	27097
<b>Human Swiss-Prot Number</b>	O75529
<b>Alternative Names</b>	TAF5L; PAF65B; TAF5-like RNA polymerase II p300/CBP-associated factor-associated factor 65 kDa subunit 5L; PCAF-associated factor 65 beta; PAF65-beta

#### Background

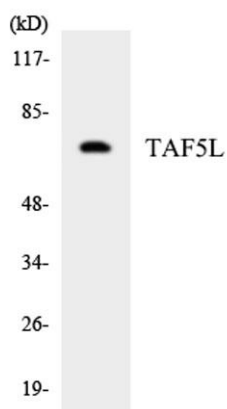
The product of this gene belongs to the WD-repeat TAF5 family of proteins. This gene encodes a protein that is a component of the PCAF histone acetylase complex. The PCAF histone acetylase complex, which is composed of more than 20 polypeptides some of which are TAFs, is required for myogenic transcription and differentiation. TAFs may participate in basal transcription, serve as coactivators, function in promoter recognition or modify general transcription factors to facilitate complex assembly and transcription initiation. The encoded protein is structurally similar to one of the histone-like TAFs, TAF5. Alternatively spliced transcript variants encoding different isoforms have been identified for this gene. [provided by RefSeq, Jul 2008],



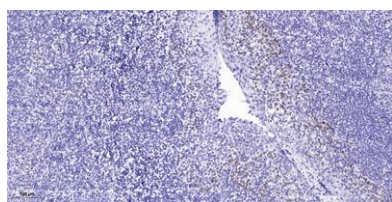
**Western Blot analysis of various cells using TAF5L Polyclonal Antibody cells nucleus extracted by Minute TM Cytoplasmic and Nuclear Fractionation kit (SC-003, Invent biotech, MN, USA).**



Western blot analysis of lysates from HT-29 and COS7 cells, using TAF5L Antibody. The lane on the right is blocked with the synthesized peptide.



Western blot analysis of the lysates from HepG2 cells using TAF5L antibody.



Immunohistochemical analysis of paraffin-embedded human tonsil. 1, Antibody was diluted at 1:200(4° overnight). 2, Tris-EDTA,pH9.0 was used for antigen retrieval. 3,Secondary antibody was diluted at 1:200(room temperature, 45min).