

**TADA2L rabbit pAb****Cat#: orb766426 (Manual)**

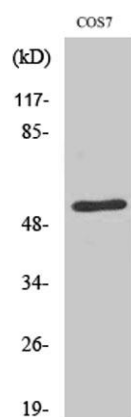
For research use only. Not intended for diagnostic use.

<b>Product Name</b>	TADA2L rabbit pAb
<b>Host species</b>	Rabbit
<b>Applications</b>	WB;ELISA
<b>Species Cross-Reactivity</b>	Human;Mouse;Rat;Monkey
<b>Recommended dilutions</b>	Western Blot: 1/500 - 1/2000. ELISA: 1/10000. Not yet tested in other applications.
<b>Immunogen</b>	The antiserum was produced against synthesized peptide derived from human ADA2L. AA range:206-255
<b>Specificity</b>	TADA2L Polyclonal Antibody detects endogenous levels of TADA2L protein.
<b>Formulation</b>	Liquid in PBS containing 50% glycerol, 0.5% BSA and 0.02% sodium azide..
<b>Storage</b>	Store at -20°C. Avoid repeated freeze-thaw cycles.
<b>Protein Name</b>	Transcriptional adapter 2-alpha
<b>Gene Name</b>	TADA2A
<b>Cellular localization</b>	Nucleus . Chromosome .
<b>Purification</b>	The antibody was affinity-purified from rabbit antiserum by affinity-chromatography using epitope-specific immunogen.
<b>Clonality</b>	Polyclonal

<b>Concentration</b>	1 mg/ml
<b>Observed band</b>	47kD
<b>Human Gene ID</b>	6871
<b>Human Swiss-Prot Number</b>	O75478
<b>Alternative Names</b>	TADA2A; TADA2L; KL04P; Transcriptional adapter 2-alpha; Transcriptional adapter 2-like; ADA2-like protein

### Background

Many DNA-binding transcriptional activator proteins enhance the initiation rate of RNA polymerase II-mediated gene transcription by interacting functionally with the general transcription machinery bound at the basal promoter. Adaptor proteins are usually required for this activation, possibly to acetylate and destabilize nucleosomes, thereby relieving chromatin constraints at the promoter. The protein encoded by this gene is a transcriptional activator adaptor and has been found to be part of the PCAF histone acetylase complex. Several alternatively spliced transcript variants encoding different isoforms of this gene have been described, but the full-length nature of some of these variants has not been determined. [provided by RefSeq, Oct 2009],



**Western Blot analysis of various cells using TADA2L Polyclonal Antibody diluted at 1:2000 cells nucleus extracted by Minute TM Cytoplasmic and Nuclear Fractionation kit (SC-003, Invent biotech, MN, USA).**

