

SWAP rabbit pAb

Cat#: orb766403 (Manual)

For research use only. Not intended for diagnostic use.

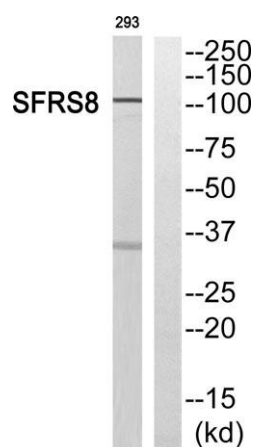
Product Name	SWAP rabbit pAb
Host species	Rabbit
Applications	WB;IHC
Species Cross-Reactivity	Human;Rat;Mouse;
Recommended dilutions	WB 1:500-2000;IHC-p 1:50-300
Immunogen	The antiserum was produced against synthesized peptide derived from human SFRS8. AA range:201-250
Specificity	SWAP Polyclonal Antibody detects endogenous levels of SWAP protein.
Formulation	Liquid in PBS containing 50% glycerol, 0.5% BSA and 0.02% sodium azide..
Storage	Store at -20°C. Avoid repeated freeze-thaw cycles.
Protein Name	Splicing factor suppressor of white-apricot homolog
Gene Name	SFSWAP
Cellular localization	Nucleus .
Purification	The antibody was affinity-purified from rabbit antiserum by affinity-chromatography using epitope-specific immunogen.
Clonality	Polyclonal

Concentration	1 mg/ml
Observed band	105kD
Human Gene ID	6433
Human Swiss-Prot Number	Q12872
Alternative Names	SFSWAP; SFRS8; SWAP; Splicing factor; suppressor of white-apricot homolog; Splicing factor, arginine/serine-rich 8; Suppressor of white apricot protein homolog

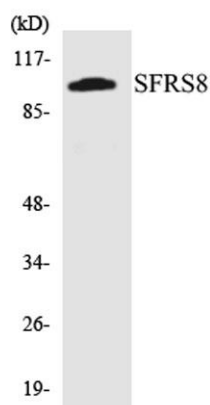
Background This gene encodes a human homolog of Drosophila splicing regulatory protein. This gene autoregulates its expression by control of splicing of its first two introns. In addition, it also regulates the splicing of fibronectin and CD45 genes. Two transcript variants encoding different isoforms have been identified. [provided by RefSeq, May 2012],



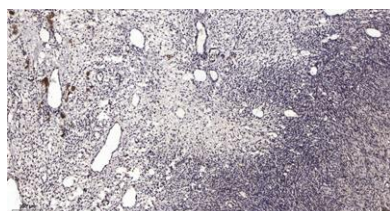
Western Blot analysis of various cells using SWAP Polyclonal Antibody cells nucleus extracted by Minute TM Cytoplasmic and Nuclear Fractionation kit (SC-003, Invent biotech, MN, USA).



Western blot analysis of SFRS8 Antibody. The lane on the right is blocked with the SFRS8 peptide.



Western blot analysis of the lysates from 293 cells using SFRS8 antibody.



Immunohistochemical analysis of paraffin-embedded human oophoroma. 1, Antibody was diluted at 1:200(4° overnight). 2, Tris-EDTA,pH9.0 was used for antigen retrieval. 3,Secondary antibody was diluted at 1:200(room temperature, 45min).