

Stathmin-3 rabbit pAb**Cat#: orb766395 (Manual)**

For research use only. Not intended for diagnostic use.

Product Name	Stathmin-3 rabbit pAb
Host species	Rabbit
Applications	WB;ELISA;IHC
Species Cross-Reactivity	Human;Mouse;Rat
Recommended dilutions	WB 1:500-2000;IHC-p 1:50-300; ELISA 2000-20000
Immunogen	The antiserum was produced against synthesized peptide derived from human STMN3. AA range:61-110
Specificity	Stathmin-3 Polyclonal Antibody detects endogenous levels of Stathmin-3 protein.
Formulation	Liquid in PBS containing 50% glycerol, 0.5% BSA and 0.02% sodium azide..
Storage	Store at -20°C. Avoid repeated freeze-thaw cycles.
Protein Name	Stathmin-3
Gene Name	STMN3
Cellular localization	Golgi apparatus . Cell projection, growth cone . Cell projection, axon . Cytoplasm, cytosol .
Purification	The antibody was affinity-purified from rabbit antiserum by affinity-chromatography using epitope-specific immunogen.
Clonality	Polyclonal

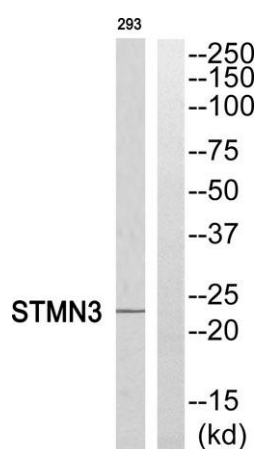
Concentration	1 mg/ml
Observed band	22kD
Human Gene ID	50861
Human Swiss-Prot Number	Q9NZ72
Alternative Names	STMN3; SCLIP; Stathmin-3; SCG10-like protein

Background

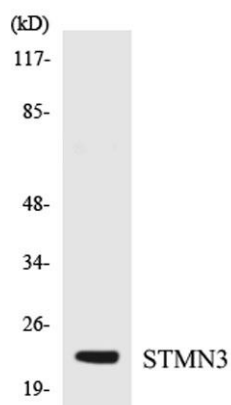
This gene encodes a protein which is a member of the stathmin protein family. Members of this protein family form a complex with tubulins at a ratio of 2 tubulins for each stathmin protein. Microtubules require the ordered assembly of alpha- and beta-tubulins, and formation of a complex with stathmin disrupts microtubule formation and function. A pseudogene of this gene is located on chromosome 22. Alternative splicing results in multiple transcript variants. [provided by RefSeq, Jan 2013],



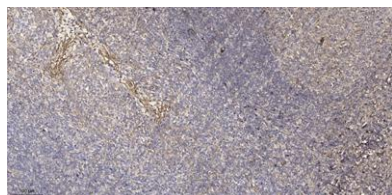
Western Blot analysis of various cells using Stathmin-3 Polyclonal Antibody



Western blot analysis of STMN3 Antibody. The lane on the right is blocked with the STMN3 peptide.



Western blot analysis of the lysates from K562 cells using STMN3 antibody.



Immunohistochemical analysis of paraffin-embedded human tonsil. 1, Antibody was diluted at 1:200(4° overnight). 2, Tris-EDTA,pH9.0 was used for antigen retrieval. 3,Secondary antibody was diluted at 1:200(room temperature, 45min).