

SRp75 rabbit pAb

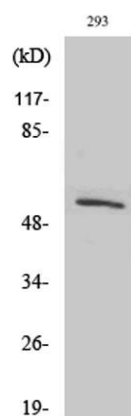
Cat#: orb766375 (Manual)

For research use only. Not intended for diagnostic use.

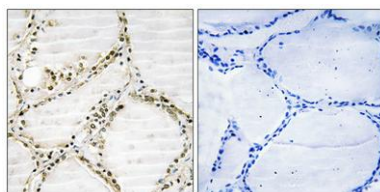
Product Name	SRp75 rabbit pAb
Host species	Rabbit
Applications	WB;IHC;IF;ELISA
Species Cross-Reactivity	Human;Mouse
Recommended dilutions	Western Blot: 1/500 - 1/2000. Immunohistochemistry: 1/100 - 1/300. ELISA: 1/20000. Not yet tested in other applications.
Immunogen	The antiserum was produced against synthesized peptide derived from human SFRS4. AA range:111-160
Specificity	SRp75 Polyclonal Antibody detects endogenous levels of SRp75 protein.
Formulation	Liquid in PBS containing 50% glycerol, 0.5% BSA and 0.02% sodium azide..
Storage	Store at -20°C. Avoid repeated freeze-thaw cycles.
Protein Name	Serine/arginine-rich splicing factor 4
Gene Name	SRSF4
Cellular localization	Nucleus speckle .
Purification	The antibody was affinity-purified from rabbit antiserum by affinity-chromatography using epitope-specific immunogen.
Clonality	Polyclonal

Concentration	1 mg/ml
Observed band	57kD
Human Gene ID	6429
Human Swiss-Prot Number	Q08170
Alternative Names	SRSF4; SFRS4; SRP75; Serine/arginine-rich splicing factor 4; Pre-mRNA-splicing factor SRP75; SRP001LB; Splicing factor; arginine/serine-rich 4

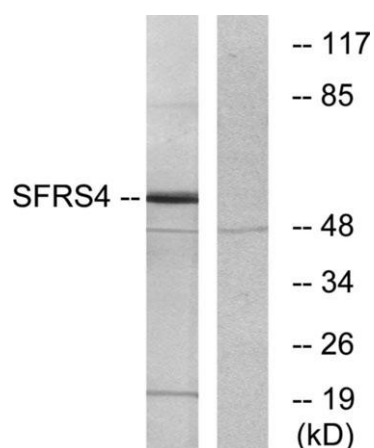
Background This gene encodes a member of the arginine/serine-rich splicing factor family. The encoded protein likely functions in mRNA processing. [provided by RefSeq, Feb 2009],



Western Blot analysis of various cells using SRp75 Polyclonal Antibody diluted at 1:1000 cells nucleus extracted by Minute TM Cytoplasmic and Nuclear Fractionation kit (SC-003, Invent biotech, MN, USA).



Immunohistochemical analysis of paraffin-embedded Human thyroid gland. Antibody was diluted at 1:100 (4° overnight). High-pressure and temperature Tris-EDTA, pH 8.0 was used for antigen retrieval. Negative control (right) obtained from antibody was pre-absorbed.



Western blot analysis of lysates from LOVO cells, using SFRS4 Antibody. The lane on the right is blocked with the synthesized peptide.