

**SPT3 rabbit pAb****Cat#: orb766363 (Manual)**

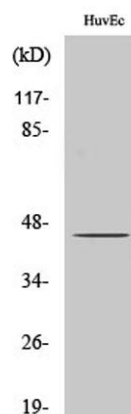
For research use only. Not intended for diagnostic use.

<b>Product Name</b>	SPT3 rabbit pAb
<b>Host species</b>	Rabbit
<b>Applications</b>	WB;IHC;IF;ELISA
<b>Species Cross-Reactivity</b>	Human;Rat;Mouse;
<b>Recommended dilutions</b>	Western Blot: 1/500 - 1/2000. Immunohistochemistry: 1/100 - 1/300. ELISA: 1/20000. Not yet tested in other applications.
<b>Immunogen</b>	The antiserum was produced against synthesized peptide derived from human SUPT3H. AA range:171-220
<b>Specificity</b>	SPT3 Polyclonal Antibody detects endogenous levels of SPT3 protein.
<b>Formulation</b>	Liquid in PBS containing 50% glycerol, 0.5% BSA and 0.02% sodium azide..
<b>Storage</b>	Store at -20°C. Avoid repeated freeze-thaw cycles.
<b>Protein Name</b>	Transcription initiation protein SPT3 homolog
<b>Gene Name</b>	SUPT3H
<b>Cellular localization</b>	Nucleus .
<b>Purification</b>	The antibody was affinity-purified from rabbit antiserum by affinity-chromatography using epitope-specific immunogen.
<b>Clonality</b>	Polyclonal

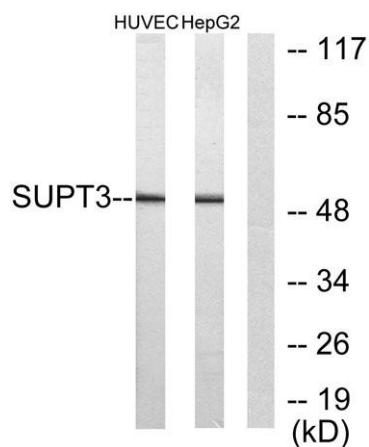
<b>Concentration</b>	1 mg/ml
<b>Observed band</b>	50kD
<b>Human Gene ID</b>	8464
<b>Human Swiss-Prot Number</b>	O75486
<b>Alternative Names</b>	SUPT3H; SPT3; Transcription initiation protein SPT3 homolog; SPT3-like protein

### Background

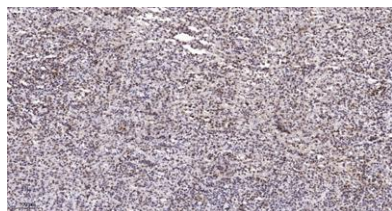
**function:**Probable transcriptional activator.,**subunit:**Component of the PCAF complex, at least composed of TADA2L/ADA2, SUPT3H, TADA3L/ADA3, TAF5L/PAF65-beta, TAF6L/PAF65-alpha, TAF10/TAFII30, TAF12/TAFII20, TAF9/TAFII31 and TRRAP. Associates with TAFII31 and GCN5L2. Component of the TFIIIC-HAT complex, at least composed of TAF5L, TAF6L, TADA3L, SUPT3H/SPT3, TAF2/TAFII150, TAF4/TAFII135, TAF5/TAFII100, GCN5L2/GCN5, TAF10 and TRRAP. Component of the STAGA transcription coactivator-HAT complex, at least composed of SUPT3H, GCN5L2, TAF5L, TAF6L, SUPT7L, TADA3L, TAD1L, TAF10, TAF12, TRRAP and TAF9. The STAGA core complex is associated with a subcomplex required for histone deubiquitinylation composed of ATXN7L3, ENY2 and USP22.,**tissue specificity:**Expressed in all tissues tested including pancreas, kidney, skeletal muscle, liver, lung, placenta, brain and heart.,



**Western Blot analysis of various cells using SPT3 Polyclonal Antibody cells nucleus extracted by Minute TM Cytoplasmic and Nuclear Fractionation kit (SC-003, Invent biotech, MN, USA).**



Western blot analysis of lysates from HUVEC and HepG2 cells, using SUPT3H Antibody. The lane on the right is blocked with the synthesized peptide.



Immunohistochemical analysis of paraffin-embedded human spleen. 1, Antibody was diluted at 1:200(4° overnight). 2, Tris-EDTA,pH9.0 was used for antigen retrieval. 3,Secondary antibody was diluted at 1:200(room temperature, 45min).