

## Spindlin-1 rabbit pAb

**Cat#: orb766360 (Manual)**

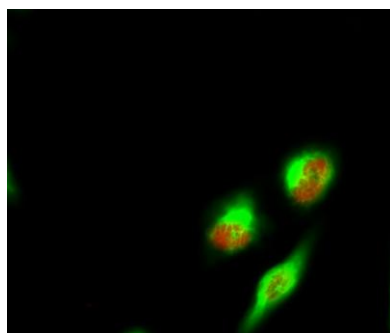
For research use only. Not intended for diagnostic use.

<b>Product Name</b>	Spindlin-1 rabbit pAb
<b>Host species</b>	Rabbit
<b>Applications</b>	WB;IHC;IF;ELISA
<b>Species Cross-Reactivity</b>	Human;Mouse;Rat
<b>Recommended dilutions</b>	Western Blot: 1/500 - 1/2000. Immunohistochemistry: 1/100 - 1/300. Immunofluorescence: 1/200 - 1/1000. ELISA: 1/20000. Not yet tested in other applications.
<b>Immunogen</b>	The antiserum was produced against synthesized peptide derived from human SPIN1. AA range:111-160
<b>Specificity</b>	Spindlin-1 Polyclonal Antibody detects endogenous levels of Spindlin-1 protein.
<b>Formulation</b>	Liquid in PBS containing 50% glycerol, 0.5% BSA and 0.02% sodium azide..
<b>Storage</b>	Store at -20°C. Avoid repeated freeze-thaw cycles.
<b>Protein Name</b>	Spindlin-1
<b>Gene Name</b>	SPIN1
<b>Cellular localization</b>	Nucleus . Nucleus, nucleolus .
<b>Purification</b>	The antibody was affinity-purified from rabbit antiserum by affinity-chromatography using epitope-specific immunogen.
<b>Clonality</b>	Polyclonal

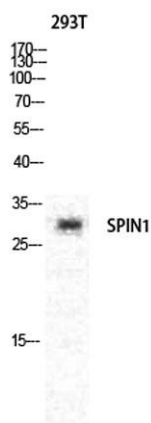
<b>Concentration</b>	1 mg/ml
<b>Observed band</b>	30kD
<b>Human Gene ID</b>	10927
<b>Human Swiss-Prot Number</b>	Q9Y657
<b>Alternative Names</b>	SPIN1; OCR; SPIN; Spindlin-1; Ovarian cancer-related protein

## Background

function:May play a role in cell-cycle regulation during the transition from gamete to embryo.,PTM:Phosphorylated during oocyte meiotic maturation.,sequence caution:Translated as Glu.,similarity:Belongs to the SPIN/STSY family.,



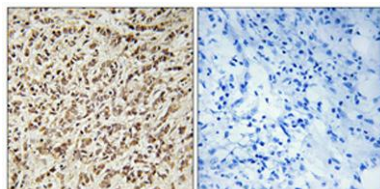
**Immunofluorescence analysis of HeLa cell.** 1,Spindlin-1 Polyclonal Antibody(red) was diluted at 1:200(4° overnight). Bcl-2 Monoclonal Antibody(6B5)(green) was diluted at 1:200(4° overnight). 2, Goat Anti Rabbit Alexa Fluor 594 Catalog:RS3611 was diluted at 1:1000(room temperature, 50min). Goat Anti Mouse Alexa Fluor 488 Catalog:RS3208 was diluted at 1:1000(room temperature, 50min).



**Western Blot analysis of various cells using Spindlin-1 Polyclonal Antibody** diluted at 1:1000 cells nucleus extracted by Minute TM Cytoplasmic and Nuclear Fractionation kit (SC-003,Inventbiotech,MN,USA).



**Western Blot analysis of HeLa cells using Spindlin-1 Polyclonal Antibody diluted at 1:1000 cells nucleus extracted by Minute TM Cytoplasmic and Nuclear Fractionation kit (SC-003, Invent biotech, MN, USA).**



**Immunohistochemical analysis of paraffin-embedded Human breast cancer. Antibody was diluted at 1:100 (4° overnight). High-pressure and temperature Tris-EDTA, pH 8.0 was used for antigen retrieval. Negative control (right) obtained from antibody was pre-absorbed by immunogen peptide.**