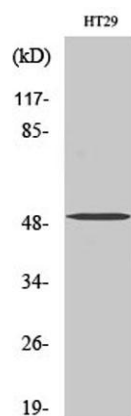


SMYD2 rabbit pAb**Cat#: orb766345 (Manual)**

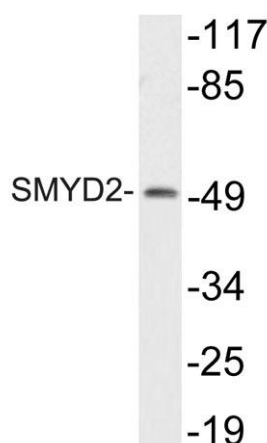
For research use only. Not intended for diagnostic use.

Product Name	SMYD2 rabbit pAb
Host species	Rabbit
Applications	WB; ELISA;IHC
Species Cross-Reactivity	Human;Mouse;Rat
Recommended dilutions	WB 1:500-2000;IHC-p 1:50-300; ELISA 2000-20000
Immunogen	The antiserum was produced against synthesized peptide derived from human SMYD2. AA range:99-148
Specificity	SMYD2 Polyclonal Antibody detects endogenous levels of SMYD2 protein.
Formulation	Liquid in PBS containing 50% glycerol, 0.5% BSA and 0.02% sodium azide..
Storage	Store at -20°C. Avoid repeated freeze-thaw cycles.
Protein Name	N-lysine methyltransferase SMYD2
Gene Name	SMYD2
Cellular localization	Cytoplasm, cytosol . Nucleus .
Purification	The antibody was affinity-purified from rabbit antiserum by affinity-chromatography using epitope-specific immunogen.
Clonality	Polyclonal

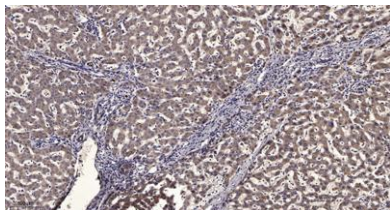
Concentration	1 mg/ml
Observed band	50kD
Human Gene ID	56950
Human Swiss-Prot Number	Q9NRG4
Alternative Names	SMYD2; KMT3C; N-lysine methyltransferase SMYD2; HSKM-B; Histone methyltransferase SMYD2; Lysine N-methyltransferase 3C; SET and MYND domain-containing protein 2
Background	SET and MYND domain containing 2(SMYD2) Homo sapiens SET domain-containing proteins, such as SMYD2, catalyze lysine methylation (Brown et al., 2006 [PubMed 16805913]).[supplied by OMIM, Nov 2008],



Western Blot analysis of various cells using SMYD2 Polyclonal Antibody diluted at 1:2000



Western blot analysis of lysate from HT29 cells, using SMYD2 antibody.



Immunohistochemical analysis of paraffin-embedded human liver cancer. 1, Antibody was diluted at 1:200(4° overnight). 2, Tris-EDTA,pH9.0 was used for antigen retrieval. 3,Secondary antibody was diluted at 1:200(room temperature, 45min).