

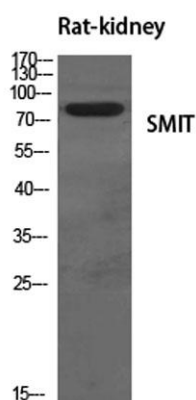
## SMIT rabbit pAb

**Cat#: orb766343 (Manual)**

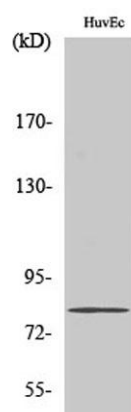
For research use only. Not intended for diagnostic use.

<b>Product Name</b>	SMIT rabbit pAb
<b>Host species</b>	Rabbit
<b>Applications</b>	WB; ELISA;IHC
<b>Species Cross-Reactivity</b>	Human;Mouse;Rat
<b>Recommended dilutions</b>	WB 1:500-2000;IHC-p 1:50-300; ELISA 2000-20000
<b>Immunogen</b>	The antiserum was produced against synthesized peptide derived from human SLC5A3. AA range:221-270
<b>Specificity</b>	SMIT Polyclonal Antibody detects endogenous levels of SMIT protein.
<b>Formulation</b>	Liquid in PBS containing 50% glycerol, 0.5% BSA and 0.02% sodium azide..
<b>Storage</b>	Store at -20°C. Avoid repeated freeze-thaw cycles.
<b>Protein Name</b>	Sodium/myo-inositol cotransporter
<b>Gene Name</b>	SLC5A3
<b>Cellular localization</b>	Membrane; Multi-pass membrane protein.
<b>Purification</b>	The antibody was affinity-purified from rabbit antiserum by affinity-chromatography using epitope-specific immunogen.
<b>Clonality</b>	Polyclonal

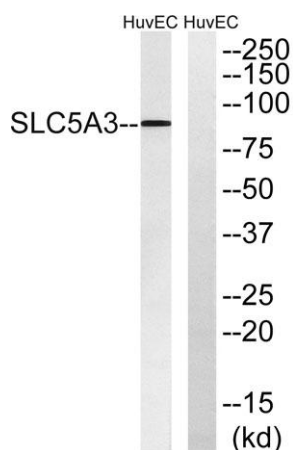
<b>Concentration</b>	1 mg/ml
<b>Observed band</b>	80kD
<b>Human Gene ID</b>	6526
<b>Human Swiss-Prot Number</b>	P53794
<b>Alternative Names</b>	SLC5A3; Sodium/myo-inositol cotransporter; Na(+)/myo-inositol cotransporter; Sodium/myo-inositol transporter 1; SMIT1; Solute carrier family 5 member 3
<b>Background</b>	function:Prevents intracellular accumulation of high concentrations of myo-inositol (an osmolyte) that result in impairment of cellular function.,similarity:Belongs to the sodium:solute symporter (SSF) (TC 2.A.21) family.,



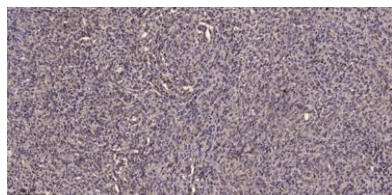
**Western Blot analysis of various cells using SMIT Polyclonal Antibody diluted at 1:500**



**Western Blot analysis of HuvEc cells using SMIT Polyclonal Antibody diluted at 1:500**



**Western blot analysis of lysates from HUVEC cells, using SLC5A3 Antibody. The lane on the right is blocked with the synthesized peptide.**



**Immunohistochemical analysis of paraffin-embedded human Colon cancer. 1, Antibody was diluted at 1:200(4° overnight). 2, Tris-EDTA,pH9.0 was used for antigen retrieval. 3,Secondary antibody was diluted at 1:200(room temperature, 45min).**