

SLK rabbit pAb

Cat#: orb766329 (Manual)

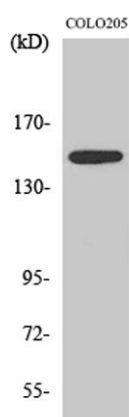
For research use only. Not intended for diagnostic use.

Product Name	SLK rabbit pAb
Host species	Rabbit
Applications	WB;IHC;IF;ELISA
Species Cross-Reactivity	Human;Mouse;Rat
Recommended dilutions	Western Blot: 1/500 - 1/2000. Immunohistochemistry: 1/100 - 1/300. Immunofluorescence: 1/200 - 1/1000. ELISA: 1/5000. Not yet tested in other applications.
Immunogen	The antiserum was produced against synthesized peptide derived from human SLK. AA range:1151-1200
Specificity	SLK Polyclonal Antibody detects endogenous levels of SLK protein.
Formulation	Liquid in PBS containing 50% glycerol, 0.5% BSA and 0.02% sodium azide..
Storage	Store at -20°C. Avoid repeated freeze-thaw cycles.
Protein Name	STE20-like serine/threonine-protein kinase
Gene Name	SLK
Cellular localization	Cytoplasm .
Purification	The antibody was affinity-purified from rabbit antiserum by affinity-chromatography using epitope-specific immunogen.
Clonality	Polyclonal

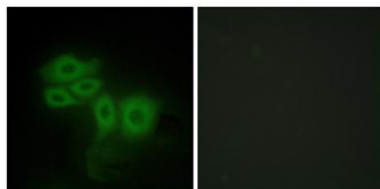
Concentration	1 mg/ml
Observed band	150kD
Human Gene ID	9748
Human Swiss-Prot Number	Q9H2G2
Alternative Names	SLK; KIAA0204; STK2; STE20-like serine/threonine-protein kinase; STE20-like kinase; hSLK; CTCL tumor antigen se20-9; STE20-related serine/threonine-protein kinase; STE20-related kinase; Serine/threonine-protein kinase 2

Background

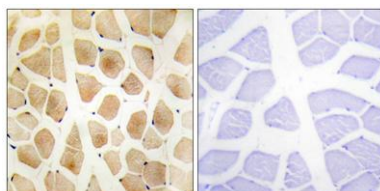
catalytic activity:ATP + a protein = ADP + a phosphoprotein.,function:Mediates apoptosis and actin stress fiber dissolution.,PTM:Autophosphorylated. Phosphorylated upon DNA damage, probably by ATM or ATR.,PTM:Proteolytically cleaved by caspase-3.,sequence caution:Contaminating sequence. Potential poly-A sequence starting in position 422.,sequence caution:Contaminating sequence. Potential poly-A sequence starting in position 611.,sequence caution:Contaminating sequence. Potential poly-A sequence starting in position 614.,similarity:Belongs to the protein kinase superfamily. STE Ser/Thr protein kinase family. STE20 subfamily.,similarity:Contains 1 protein kinase domain.,similarity:Contains 1 UVR domain.,tissue specificity:Ubiquitously expressed. Highest expression is found in heart and in skeletal muscle.,



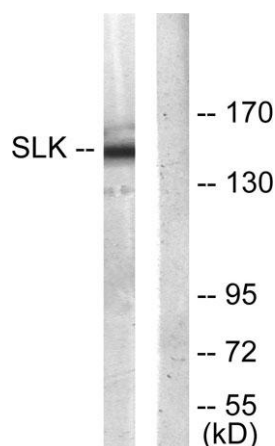
Western Blot analysis of various cells using SLK Polyclonal Antibody diluted at 1:1000



Immunofluorescence analysis of HepG2 cells, using SLK Antibody. The picture on the right is blocked with the synthesized peptide.



Immunohistochemistry analysis of paraffin-embedded human skeletal muscle tissue, using SLK Antibody. The picture on the right is blocked with the synthesized peptide.



Western blot analysis of lysates from COLO205 cells, using SLK Antibody. The lane on the right is blocked with the synthesized peptide.