

Septin 8 rabbit pAb**Cat#: orb766302 (Manual)**

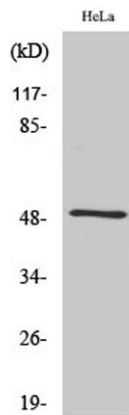
For research use only. Not intended for diagnostic use.

| | |
|---------------------------------|---|
| Product Name | Septin 8 rabbit pAb |
| Host species | Rabbit |
| Applications | WB;ELISA;IHC |
| Species Cross-Reactivity | Human;Mouse;Rat |
| Recommended dilutions | WB 1:500-2000;IHC-p 1:50-300; ELISA 2000-20000 |
| Immunogen | The antiserum was produced against synthesized peptide derived from human SEPT8. AA range:170-219 |
| Specificity | Septin 8 Polyclonal Antibody detects endogenous levels of Septin 8 protein. |
| Formulation | Liquid in PBS containing 50% glycerol, 0.5% BSA and 0.02% sodium azide.. |
| Storage | Store at -20°C. Avoid repeated freeze-thaw cycles. |
| Protein Name | Septin-8 |
| Gene Name | SEPT8 |
| Cellular localization | Cytoplasm . Cytoplasm, cytoskeleton . Cell junction, synapse . Cell projection, axon . Cytoplasmic vesicle, secretory vesicle, synaptic vesicle membrane . Cell junction, synapse, presynapse . Expressed in axons of immature neurons, localizes to synapses in mature neurons (By similarity). In platelets, found in areas surrounding alpha-granules (PubMed:15116257). . |
| Purification | The antibody was affinity-purified from rabbit antiserum by affinity-chromatography using epitope-specific immunogen. |

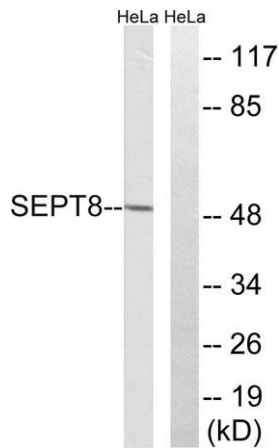
| | |
|--------------------------------|---------------------------|
| Clonality | Polyclonal |
| Concentration | 1 mg/ml |
| Observed band | 50kD |
| Human Gene ID | 23176 |
| Human Swiss-Prot Number | Q92599 |
| Alternative Names | SEPT8; KIAA0202; Septin-8 |

Background

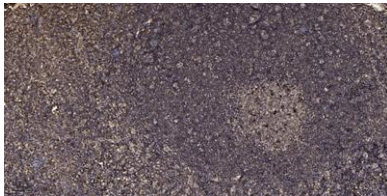
septin 8(SEPT8) Homo sapiens This gene is a member of the septin family of nucleotide binding proteins, originally described in yeast as cell division cycle regulatory proteins. Septins are highly conserved in yeast, Drosophila, and mouse, and appear to regulate cytoskeletal organization. Disruption of septin function disturbs cytokinesis and results in large multinucleate or polyploid cells. Multiple alternatively spliced transcript variants encoding different isoforms have been found for this gene. [provided by RefSeq, Jul 2014],



Western Blot analysis of various cells using Septin 8 Polyclonal Antibody diluted at 1:2000



Western blot analysis of lysates from HeLa cells, using SEPT8 Antibody. The lane on the right is blocked with the synthesized peptide.



Immunohistochemical analysis of paraffin-embedded human tonsil. 1, Antibody was diluted at 1:200(4° overnight). 2, Tris-EDTA,pH9.0 was used for antigen retrieval. 3,Secondary antibody was diluted at 1:200(room temperature, 45min).