

SENP8 rabbit pAb**Cat#: orb766297 (Manual)**

For research use only. Not intended for diagnostic use.

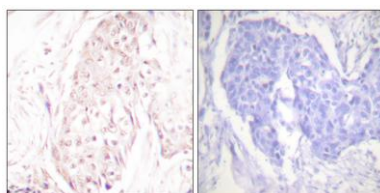
Product Name	SENP8 rabbit pAb
Host species	Rabbit
Applications	WB;IHC;IF;ELISA
Species Cross-Reactivity	Human;Mouse;Rat
Recommended dilutions	Western Blot: 1/500 - 1/2000. Immunohistochemistry: 1/100 - 1/300. ELISA: 1/10000. Not yet tested in other applications.
Immunogen	The antiserum was produced against synthesized peptide derived from human SENP8. AA range:161-210
Specificity	SENP8 Polyclonal Antibody detects endogenous levels of SENP8 protein.
Formulation	Liquid in PBS containing 50% glycerol, 0.5% BSA and 0.02% sodium azide..
Storage	Store at -20°C. Avoid repeated freeze-thaw cycles.
Protein Name	Sentrin-specific protease 8
Gene Name	SENP8
Cellular localization	
Purification	The antibody was affinity-purified from rabbit antiserum by affinity-chromatography using epitope-specific immunogen.
Clonality	Polyclonal

Concentration	1 mg/ml
Observed band	27kD
Human Gene ID	123228
Human Swiss-Prot Number	Q96LD8
Alternative Names	SENp8; DEN1; NEDP1; PRSC2; FKSG8; Sentrin-specific protease 8; Deneddylase-1; NEDD8-specific protease 1; Protease; cysteine 2; Sentrin/SUMO-specific protease SENP8

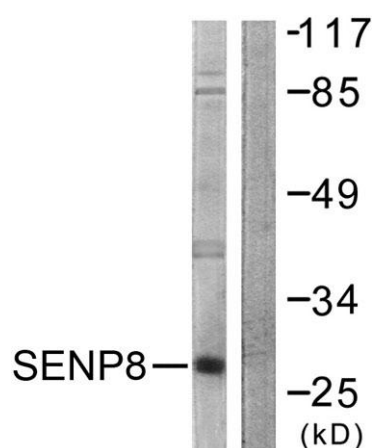
Background This gene encodes a cysteine protease that is a member of the sentrin-specific protease family. The encoded protein is involved in processing and deconjugation of the ubiquitin-like protein termed, neural precursor cell expressed developmentally downregulated 8. Alternate splicing results in multiple transcript variants.[provided by RefSeq, Oct 2009],



Western Blot analysis of various cells using SENP8 Polyclonal Antibody



Immunohistochemistry analysis of paraffin-embedded human breast carcinoma tissue, using SENP8 Antibody. The picture on the right is blocked with the synthesized peptide.



Western blot analysis of lysates from HUVEC cells, using SENP8 Antibody. The lane on the right is blocked with the synthesized peptide.