

SENP1 rabbit pAb**Cat#: orb766294 (Manual)**

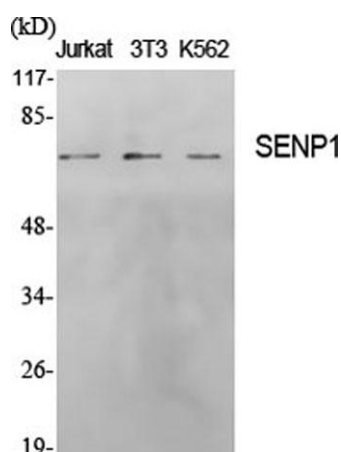
For research use only. Not intended for diagnostic use.

Product Name	SENP1 rabbit pAb
Host species	Rabbit
Applications	WB;IHC;IF;ELISA
Species Cross-Reactivity	Human;Mouse
Recommended dilutions	Western Blot: 1/500 - 1/2000. Immunohistochemistry: 1/100 - 1/300. ELISA: 1/20000. Not yet tested in other applications.
Immunogen	The antiserum was produced against synthesized peptide derived from human SENP1. AA range:1-50
Specificity	SENP1 Polyclonal Antibody detects endogenous levels of SENP1 protein.
Formulation	Liquid in PBS containing 50% glycerol, 0.5% BSA and 0.02% sodium azide..
Storage	Store at -20°C. Avoid repeated freeze-thaw cycles.
Protein Name	Sentrin-specific protease 1
Gene Name	SENP1
Cellular localization	Nucleus . Cytoplasm. Shuttles between cytoplasm and nucleus.
Purification	The antibody was affinity-purified from rabbit antiserum by affinity-chromatography using epitope-specific immunogen.
Clonality	Polyclonal

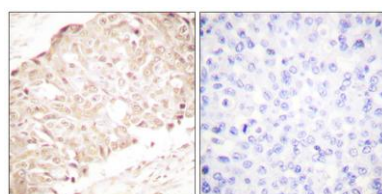
Concentration	1 mg/ml
Observed band	73kD
Human Gene ID	29843
Human Swiss-Prot Number	Q9P0U3
Alternative Names	SEN1; Sentrin-specific protease 1; Sentrin/SUMO-specific protease SEN1

Background

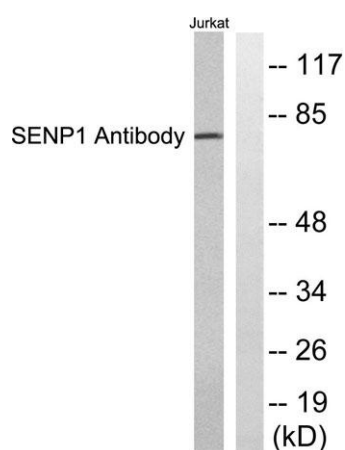
This gene encodes a cysteine protease that specifically targets members of the small ubiquitin-like modifier (SUMO) protein family. This protease regulates SUMO pathways by deconjugating sumoylated proteins. This protease also functions to process the precursor SUMO proteins into their mature form. Alternate splicing results in multiple transcript variants. [provided by RefSeq, Jun 2012],



Western Blot analysis of various cells using SEN1 Polyclonal Antibody



Immunohistochemistry analysis of paraffin-embedded human breast carcinoma tissue, using SEN1 Antibody. The picture on the right is blocked with the synthesized peptide.



Western blot analysis of lysates from Jurkat cells, using SENP1 Antibody. The lane on the right is blocked with the synthesized peptide.