

SCCA2 rabbit pAb**Cat#: orb766286 (Manual)**

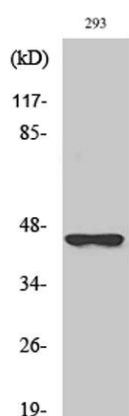
For research use only. Not intended for diagnostic use.

Product Name	SCCA2 rabbit pAb
Host species	Rabbit
Applications	WB;ELISA;IHC
Species Cross-Reactivity	Human;Rat;Mouse;
Recommended dilutions	WB 1:500-2000;IHC-p 1:50-300; ELISA 2000-20000
Immunogen	The antiserum was produced against synthesized peptide derived from human SERPINB4. AA range:261-310
Specificity	SCCA2 Polyclonal Antibody detects endogenous levels of SCCA2 protein.
Formulation	Liquid in PBS containing 50% glycerol, 0.5% BSA and 0.02% sodium azide..
Storage	Store at -20°C. Avoid repeated freeze-thaw cycles.
Protein Name	Serpin B4
Gene Name	SERPINB4
Cellular localization	Cytoplasm . Seems to also be secreted in plasma by cancerous cells but at a low level.
Purification	The antibody was affinity-purified from rabbit antiserum by affinity-chromatography using epitope-specific immunogen.
Clonality	Polyclonal

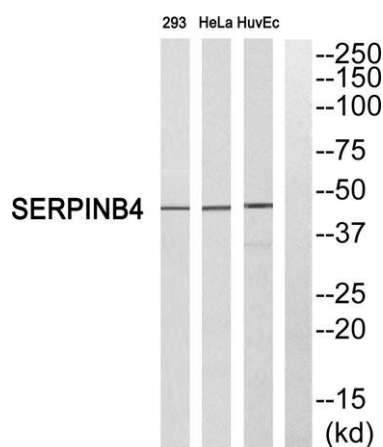
Concentration	1 mg/ml
Observed band	45kD
Human Gene ID	6318
Human Swiss-Prot Number	P48594
Alternative Names	SERPINB4; PI11; SCCA2; Serpin B4; Leupin; Peptidase inhibitor 11; PI-11; Squamous cell carcinoma antigen 2; SCCA-2

Background

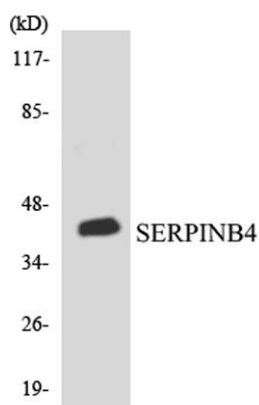
function: May act as a protease inhibitor to modulate the host immune response against tumor cells.,similarity: Belongs to the serpin family.,similarity: Belongs to the serpin family. Ov-serpin subfamily.,subcellular location: Seems to also be secreted in plasma by cancerous cells but at a low level.,tissue specificity: Squamous cells.,



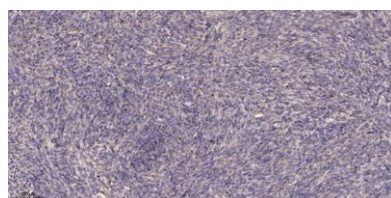
Western Blot analysis of various cells using SCCA2 Polyclonal Antibody



Western blot analysis of SERPINB4 Antibody. The lane on the right is blocked with the SERPINB4 peptide.



Western blot analysis of the lysates from COLO205 cells using SERPINB4 antibody.



Immunohistochemical analysis of paraffin-embedded human Colon cancer. 1, Antibody was diluted at 1:200(4° overnight). 2, Tris-EDTA,pH9.0 was used for antigen retrieval. 3,Secondary antibody was diluted at 1:200(room temperature, 45min).