

RPAP2 rabbit pAb

Cat#: orb766267 (Manual)

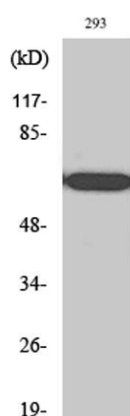
For research use only. Not intended for diagnostic use.

Product Name	RPAP2 rabbit pAb
Host species	Rabbit
Applications	WB;ELISA
Species Cross-Reactivity	Human;Rat;Mouse;
Recommended dilutions	Western Blot: 1/500 - 1/2000. ELISA: 1/10000. Not yet tested in other applications.
Immunogen	The antiserum was produced against synthesized peptide derived from human RPAP2. AA range:460-509
Specificity	RPAP2 Polyclonal Antibody detects endogenous levels of RPAP2 protein.
Formulation	Liquid in PBS containing 50% glycerol, 0.5% BSA and 0.02% sodium azide..
Storage	Store at -20°C. Avoid repeated freeze-thaw cycles.
Protein Name	Putative RNA polymerase II subunit B1 CTD phosphatase RPAP2
Gene Name	RPAP2
Cellular localization	Cytoplasm . Nucleus . Shuttles between the cytoplasm and the nucleus in a CRM1-dependent manner.
Purification	The antibody was affinity-purified from rabbit antiserum by affinity-chromatography using epitope-specific immunogen.
Clonality	Polyclonal

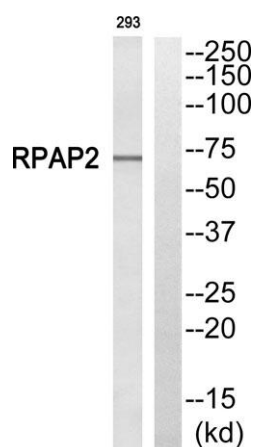
Concentration	1 mg/ml
Observed band	70kD
Human Gene ID	79871
Human Swiss-Prot Number	Q8IXW5
Alternative Names	RPAP2; C1orf82; Putative RNA polymerase II subunit B1 CTD phosphatase RPAP2; RNA polymerase II-associated protein 2

Background

function:Forms an interface between the RNA polymerase II enzyme and chaperone/scaffolding protein, suggesting that it is required to connect RNA polymerase II to regulators of protein complex formation.,similarity:Belongs to the RPAP2 family.,subunit:Tightly associated with the RNA polymerase II complex.,



Western Blot analysis of various cells using RPAP2 Polyclonal Antibody



Western blot analysis of RPAP2 Antibody. The lane on the right is blocked with the RPAP2 peptide.