

RNF130 rabbit pAb**Cat#: orb766261 (Manual)**

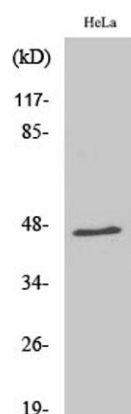
For research use only. Not intended for diagnostic use.

Product Name	RNF130 rabbit pAb
Host species	Rabbit
Applications	WB;ELISA;IHC
Species Cross-Reactivity	Human;Mouse;Rat
Recommended dilutions	WB 1:500-2000;IHC-p 1:50-300; ELISA 2000-20000
Immunogen	The antiserum was produced against synthesized peptide derived from human RNF130. AA range:231-280
Specificity	RNF130 Polyclonal Antibody detects endogenous levels of RNF130 protein.
Formulation	Liquid in PBS containing 50% glycerol, 0.5% BSA and 0.02% sodium azide..
Storage	Store at -20°C. Avoid repeated freeze-thaw cycles.
Protein Name	E3 ubiquitin-protein ligase RNF130
Gene Name	RNF130
Cellular localization	Membrane ; Single-pass type I membrane protein . Cytoplasm .
Purification	The antibody was affinity-purified from rabbit antiserum by affinity-chromatography using epitope-specific immunogen.
Clonality	Polyclonal

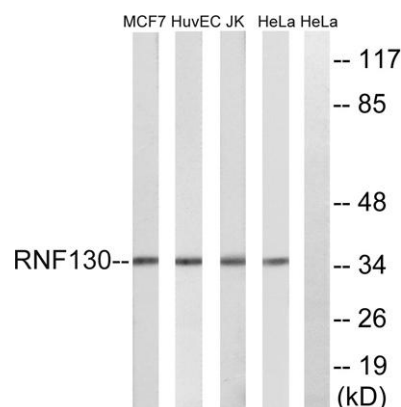
Concentration	1 mg/ml
Observed band	36kD
Human Gene ID	55819
Human Swiss-Prot Number	Q86XS8
Alternative Names	RNF130; E3 ubiquitin-protein ligase RNF130; Goliath homolog; H-Goliath; RING finger protein 130

Background

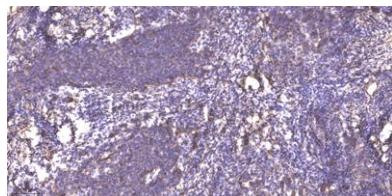
ring finger protein 130(RNF130) Homo sapiens The protein encoded by this gene contains a RING finger motif and is similar to gl, a Drosophila zinc-finger protein that is expressed in mesoderm and involved in embryonic development. The expression of the mouse counterpart was found to be upregulated in myeloblastic cells following IL3 deprivation, suggesting that this gene may regulate growth factor withdrawal-induced apoptosis of myeloid precursor cells. Alternative splicing results in multiple transcript variants. [provided by RefSeq, Jul 2013],



Western Blot analysis of various cells using RNF130 Polyclonal Antibody diluted at 1:1000



Western blot analysis of lysates from HeLa, Jurkat, HUVEC, and MCF-7 cells, using RNF130 Antibody. The lane on the right is blocked with the synthesized peptide.



Immunohistochemical analysis of paraffin-embedded human cervical carcinoma. 1, Antibody was diluted at 1:200(4^o overnight). 2, Tris-EDTA,pH9.0 was used for antigen retrieval. 3,Secondary antibody was diluted at 1:200(room temperature, 45min).