

M-RIP rabbit pAb**Cat#: orb766257 (Manual)**

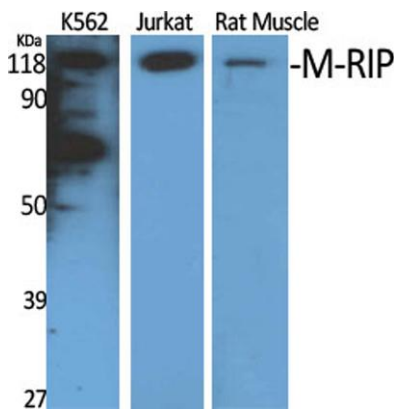
For research use only. Not intended for diagnostic use.

Product Name	M-RIP rabbit pAb
Host species	Rabbit
Applications	WB;ELISA;IHC
Species Cross-Reactivity	Human;Mouse;Rat
Recommended dilutions	WB 1:500-2000;IHC-p 1:50-300; ELISA 2000-20000
Immunogen	Synthesized peptide derived from the Internal region of human M-RIP.
Specificity	M-RIP Polyclonal Antibody detects endogenous levels of M-RIP protein.
Formulation	Liquid in PBS containing 50% glycerol, 0.5% BSA and 0.02% sodium azide..
Storage	Store at -20°C. Avoid repeated freeze-thaw cycles.
Protein Name	Myosin phosphatase Rho-interacting protein
Gene Name	MPRIP
Cellular localization	Cytoplasm, cytoskeleton . Colocalizes with F-actin.
Purification	The antibody was affinity-purified from rabbit antiserum by affinity-chromatography using epitope-specific immunogen.
Clonality	Polyclonal

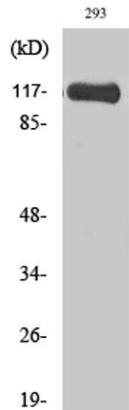
Concentration	1 mg/ml
Observed band	115kD
Human Gene ID	23164/23164
Human Swiss-Prot Number	Q6WCQ1
Alternative Names	MPRIP; KIAA0864; MRIP; RHOIP3; Myosin phosphatase Rho-interacting protein; M-RIP; Rho-interacting protein 3; RIP3; p116Rip

Background

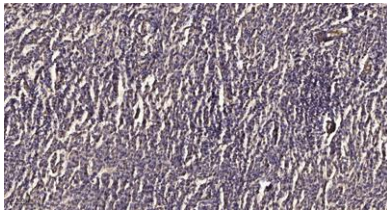
function: Targets myosin phosphatase to the actin cytoskeleton. Required for the regulation of the actin cytoskeleton by RhoA and ROCK1. Depletion leads to an increased number of stress fibers in smooth muscle cells through stabilization of actin fibers by phosphorylated myosin. Overexpression of MRIP as well as its F-actin-binding region leads to disassembly of stress fibers in neuronal cells.,similarity: Contains 1 PH domain.,similarity: Contains 2 PH domains.,subcellular location: Colocalizes with F-actin.,subunit: Binds F-actin through its N-terminus (By similarity). Binds RHOA, PPP1R12A/MBS and PPP1R12C/MBS85 through adjacent coiled coil domains.,



Western Blot analysis of various cells using M-RIP Polyclonal Antibody



Western Blot analysis of 293 cells using M-RIP Polyclonal Antibody



Immunohistochemical analysis of paraffin-embedded human meningioma. 1, Antibody was diluted at 1:200(4° overnight). 2, Tris-EDTA,pH9.0 was used for antigen retrieval. 3,Secondary antibody was diluted at 1:200(room temperature, 45min).