

Ribosomal Protein S27L rabbit pAb

Cat#: orb766247 (Manual)

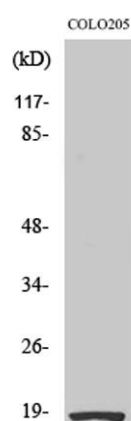
For research use only. Not intended for diagnostic use.

Product Name	Ribosomal Protein S27L rabbit pAb
Host species	Rabbit
Applications	WB;IHC;IF;ELISA
Species Cross-Reactivity	Human;Mouse
Recommended dilutions	Western Blot: 1/500 - 1/2000. Immunohistochemistry: 1/100 - 1/300. ELISA: 1/10000. Not yet tested in other applications.
Immunogen	The antiserum was produced against synthesized peptide derived from human RPS27L. AA range:1-50
Specificity	Ribosomal Protein S27L Polyclonal Antibody detects endogenous levels of Ribosomal Protein S27L protein.
Formulation	Liquid in PBS containing 50% glycerol, 0.5% BSA and 0.02% sodium azide..
Storage	Store at -20°C. Avoid repeated freeze-thaw cycles.
Protein Name	40S ribosomal protein S27-like
Gene Name	RPS27L
Cellular localization	nucleus,nucleoplasm,ribosome,cytosolic small ribosomal subunit,
Purification	The antibody was affinity-purified from rabbit antiserum by affinity-chromatography using epitope-specific immunogen.
Clonality	Polyclonal

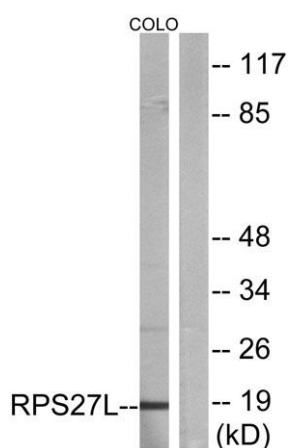
Concentration	1 mg/ml
Observed band	18kD
Human Gene ID	51065
Human Swiss-Prot Number	Q71UM5
Alternative Names	RPS27L; 40S ribosomal protein S27-like

Background

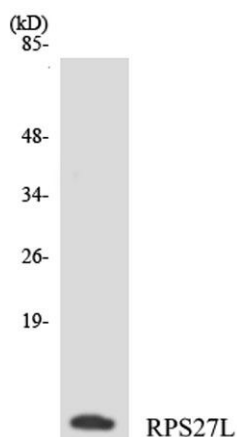
This gene encodes a protein sharing 96% amino acid similarity with ribosomal protein S27, which suggests the encoded protein may be a component of the 40S ribosomal subunit. [provided by RefSeq, Jul 2008],



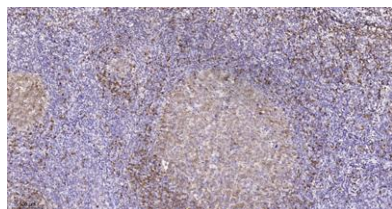
Western Blot analysis of various cells using Ribosomal Protein S27L Polyclonal Antibody



Western blot analysis of lysates from COLO cells, using RPS27L Antibody. The lane on the right is blocked with the synthesized peptide.



Western blot analysis of the lysates from COLO205 cells using RPS27L antibody.



Immunohistochemical analysis of paraffin-embedded human tonsil. 1, Tris-EDTA, pH 9.0 was used for antigen retrieval. 2 Antibody was diluted at 1:200 (4°C overnight). 3, Secondary antibody was diluted at 1:200 (room temperature, 45 min).