

Ribosomal Protein S2 rabbit pAb

Cat#: orb766246 (Manual)

For research use only. Not intended for diagnostic use.

Product Name	Ribosomal Protein S2 rabbit pAb
Host species	Rabbit
Applications	WB;ELISA;IHC
Species Cross-Reactivity	Human;Mouse;Rat
Recommended dilutions	WB 1:500-2000;IHC-p 1:50-300; ELISA 2000-20000
Immunogen	The antiserum was produced against synthesized peptide derived from human RPS2. AA range:244-293
Specificity	Ribosomal Protein S2 Polyclonal Antibody detects endogenous levels of Ribosomal Protein S2 protein.
Formulation	Liquid in PBS containing 50% glycerol, 0.5% BSA and 0.02% sodium azide..
Storage	Store at -20°C. Avoid repeated freeze-thaw cycles.
Protein Name	40S ribosomal protein S2
Gene Name	RPS2
Cellular localization	nucleus,nucleoplasm,nucleolus,cytoplasm,cytosol,ribosome,cell-cell adherens junction,focal adhesion,small ribosomal subunit,membrane,cytosolic small ribosomal subunit,extracellular exosome,
Purification	The antibody was affinity-purified from rabbit antiserum by affinity-chromatography using epitope-specific immunogen.

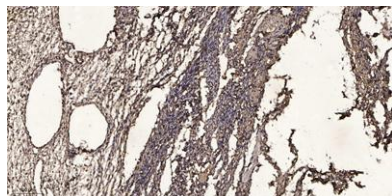
Clonality	Polyclonal
Concentration	1 mg/ml
Observed band	31kD
Human Gene ID	6187
Human Swiss-Prot Number	P15880
Alternative Names	RPS2; RPS4; 40S ribosomal protein S2; 40S ribosomal protein S4; Protein LLRep3

Background

Ribosomes, the organelles that catalyze protein synthesis, consist of a small 40S subunit and a large 60S subunit. Together these subunits are composed of 4 RNA species and approximately 80 structurally distinct proteins. This gene encodes a ribosomal protein that is a component of the 40S subunit. The protein belongs to the S5P family of ribosomal proteins. It is located in the cytoplasm. This gene shares sequence similarity with mouse LLRep3. It is co-transcribed with the small nucleolar RNA gene U64, which is located in its third intron. As is typical for genes encoding ribosomal proteins, there are multiple processed pseudogenes of this gene dispersed through the genome. [provided by RefSeq, Jul 2008].



Western Blot analysis of various cells using Ribosomal Protein S2 Polyclonal Antibody diluted at 1:2000



Immunohistochemical analysis of paraffin-embedded human oophoroma. 1, Antibody was diluted at 1:200(4° overnight). 2, Tris-EDTA,pH9.0 was used for antigen retrieval. 3,Secondary antibody was diluted at 1:200(room temperature, 45min).