

Ribosomal Protein L27A rabbit pAb**Cat#: orb766236 (Manual)**

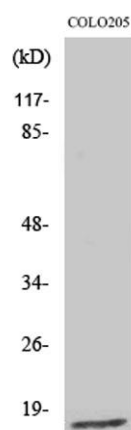
For research use only. Not intended for diagnostic use.

Product Name	Ribosomal Protein L27A rabbit pAb
Host species	Rabbit
Applications	WB;IHC;IF;ELISA
Species Cross-Reactivity	Human;Mouse;Rat
Recommended dilutions	Western Blot: 1/500 - 1/2000. Immunohistochemistry: 1/100 - 1/300. Immunofluorescence: 1/200 - 1/1000. ELISA: 1/40000. Not yet tested in other applications.
Immunogen	The antiserum was produced against synthesized peptide derived from human RPL27A. AA range:99-148
Specificity	Ribosomal Protein L27A Polyclonal Antibody detects endogenous levels of Ribosomal Protein L27A protein.
Formulation	Liquid in PBS containing 50% glycerol, 0.5% BSA and 0.02% sodium azide..
Storage	Store at -20°C. Avoid repeated freeze-thaw cycles.
Protein Name	60S ribosomal protein L27a
Gene Name	RPL27A
Cellular localization	cytosol,ribosome,large ribosomal subunit,membrane,cytosolic large ribosomal subunit,
Purification	The antibody was affinity-purified from rabbit antiserum by affinity-chromatography using epitope-specific immunogen.
Clonality	Polyclonal

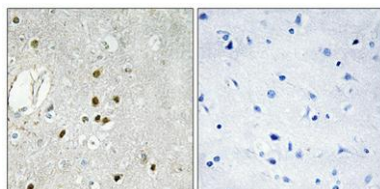
Concentration	1 mg/ml
Observed band	20kD
Human Gene ID	6157
Human Swiss-Prot Number	P46776
Alternative Names	RPL27A; 60S ribosomal protein L27a

Background

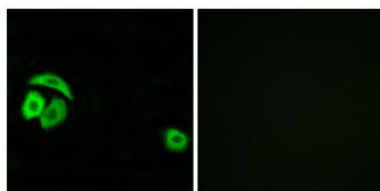
Ribosomes, the organelles that catalyze protein synthesis, consist of a small 40S subunit and a large 60S subunit. Together these subunits are composed of 4 RNA species and approximately 80 structurally distinct proteins. This gene encodes a ribosomal protein that is a component of the 60S subunit. The protein belongs to the L15P family of ribosomal proteins. It is located in the cytoplasm. Variable expression of this gene in colorectal cancers compared to adjacent normal tissues has been observed, although no correlation between the level of expression and the severity of the disease has been found. As is typical for genes encoding ribosomal proteins, multiple processed pseudogenes derived from this gene are dispersed through the genome. [provided by RefSeq, Jul 2008],



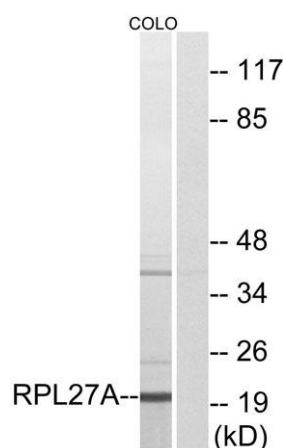
Western Blot analysis of various cells using Ribosomal Protein L27A Polyclonal Antibody diluted at 1:2000



Immunohistochemical analysis of paraffin-embedded Human brain. Antibody was diluted at 1:100(4° overnight). High-pressure and temperature Tris-EDTA,pH8.0 was used for antigen retrieval. Negative contrl (right) obtained from antibody was pre-absorbed by immunogen peptide.



Immunofluorescence analysis of A549 cells, using RPL27A Antibody. The picture on the right is blocked with the synthesized peptide.



Western blot analysis of lysates from COLO cells, using RPL27A Antibody. The lane on the right is blocked with the synthesized peptide.