

Ribosomal Protein L12 rabbit pAb

Cat#: orb766232 (Manual)

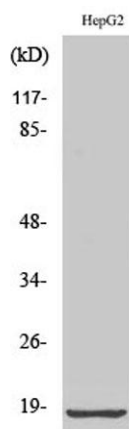
For research use only. Not intended for diagnostic use.

Product Name	Ribosomal Protein L12 rabbit pAb
Host species	Rabbit
Applications	WB;IHC;IF;ELISA
Species Cross-Reactivity	Human;Mouse;Rat
Recommended dilutions	Western Blot: 1/500 - 1/2000. Immunohistochemistry: 1/100 - 1/300. ELISA: 1/40000. Not yet tested in other applications.
Immunogen	The antiserum was produced against synthesized peptide derived from human RPL12. AA range:61-110
Specificity	Ribosomal Protein L12 Polyclonal Antibody detects endogenous levels of Ribosomal Protein L12 protein.
Formulation	Liquid in PBS containing 50% glycerol, 0.5% BSA and 0.02% sodium azide..
Storage	Store at -20°C. Avoid repeated freeze-thaw cycles.
Protein Name	60S ribosomal protein L12
Gene Name	RPL12
Cellular localization	nucleolus,cytosol,focal adhesion,membrane,cytosolic large ribosomal subunit,extracellular matrix,extracellular exosome,
Purification	The antibody was affinity-purified from rabbit antiserum by affinity-chromatography using epitope-specific immunogen.
Clonality	Polyclonal

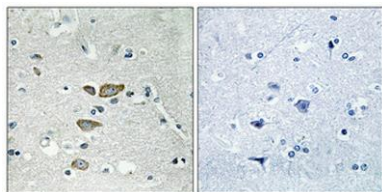
Concentration	1 mg/ml
Observed band	18kD
Human Gene ID	6136
Human Swiss-Prot Number	P30050
Alternative Names	RPL12; 60S ribosomal protein L12

Background

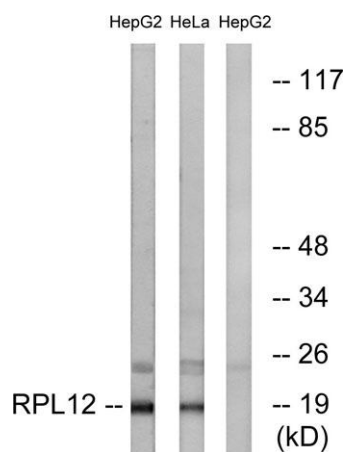
Ribosomes, the organelles that catalyze protein synthesis, consist of a small 40S subunit and a large 60S subunit. Together these subunits are composed of 4 RNA species and approximately 80 structurally distinct proteins. This gene encodes a ribosomal protein that is a component of the 60S subunit. The protein belongs to the L11P family of ribosomal proteins. It is located in the cytoplasm. The protein binds directly to the 26S rRNA. This gene is co-transcribed with the U65 snoRNA, which is located in its fourth intron. As is typical for genes encoding ribosomal proteins, there are multiple processed pseudogenes of this gene dispersed through the genome. [provided by RefSeq, Jul 2008],



Western Blot analysis of various cells using Ribosomal Protein L12 Polyclonal Antibody diluted at 1:2000



Immunohistochemical analysis of paraffin-embedded Human brain. Antibody was diluted at 1:100(4° overnight). High-pressure and temperature Tris-EDTA,pH8.0 was used for antigen retrieval. Negative contrl (right) obtained from antibody was pre-absorbed by i



Western blot analysis of lysates from HepG2 and HeLa cells, using RPL12 Antibody. The lane on the right is blocked with the synthesized peptide.