

**RhoGEF p115 rabbit pAb****Cat#: orb766230 (Manual)**

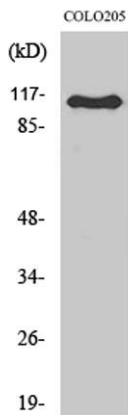
For research use only. Not intended for diagnostic use.

<b>Product Name</b>	RhoGEF p115 rabbit pAb
<b>Host species</b>	Rabbit
<b>Applications</b>	WB;ELISA;IHC
<b>Species Cross-Reactivity</b>	Human;Mouse;Rat
<b>Recommended dilutions</b>	WB 1:500-2000;IHC-p 1:50-300; ELISA 2000-20000
<b>Immunogen</b>	The antiserum was produced against synthesized peptide derived from human ARHGEF1. AA range:162-211
<b>Specificity</b>	RhoGEF p115 Polyclonal Antibody detects endogenous levels of RhoGEF p115 protein.
<b>Formulation</b>	Liquid in PBS containing 50% glycerol, 0.5% BSA and 0.02% sodium azide..
<b>Storage</b>	Store at -20°C. Avoid repeated freeze-thaw cycles.
<b>Protein Name</b>	Rho guanine nucleotide exchange factor 1
<b>Gene Name</b>	ARHGEF1
<b>Cellular localization</b>	Cytoplasm . Membrane . Translocated to the membrane by activated GNA13 or LPA stimulation.
<b>Purification</b>	The antibody was affinity-purified from rabbit antiserum by affinity-chromatography using epitope-specific immunogen.
<b>Clonality</b>	Polyclonal

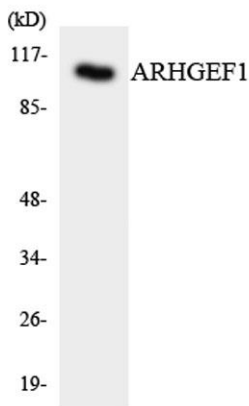
<b>Concentration</b>	1 mg/ml
<b>Observed band</b>	105kD
<b>Human Gene ID</b>	9138
<b>Human Swiss-Prot Number</b>	Q92888
<b>Alternative Names</b>	ARHGEF1; Rho guanine nucleotide exchange factor 1; 115 kDa guanine nucleotide exchange factor; p115-RhoGEF; p115RhoGEF; Sub1.5

## Background

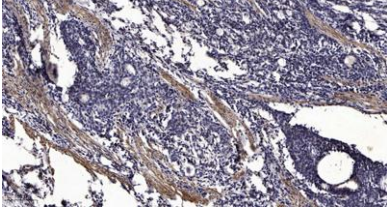
Rho GTPases play a fundamental role in numerous cellular processes that are initiated by extracellular stimuli that work through G protein coupled receptors. The encoded protein may form complex with G proteins and stimulate Rho-dependent signals. Multiple alternatively spliced transcript variants have been found for this gene, but the full-length nature of some variants has not been defined. [provided by RefSeq, Jul 2008],



Western Blot analysis of various cells using RhoGEF p115 Polyclonal Antibody



Western blot analysis of the lysates from HepG2 cells using ARHGEF1 antibody.



**Immunohistochemical analysis of paraffin-embedded human Gastric adenocarcinoma. 1, Antibody was diluted at 1:200(4° overnight). 2, Tris-EDTA,pH9.0 was used for antigen retrieval. 3,Secondary antibody was diluted at 1:200(room temperature, 45min).**