

Rho D rabbit pAb

Cat#: orb766225 (Manual)

For research use only. Not intended for diagnostic use.

Product Name	Rho D rabbit pAb
Host species	Rabbit
Applications	WB;ELISA;IHC
Species Cross-Reactivity	Human;Rat;Mouse;
Recommended dilutions	WB 1:500-2000;IHC-p 1:50-300; ELISA 2000-20000
Immunogen	The antiserum was produced against synthesized peptide derived from human RHOD. AA range:113-162
Specificity	Rho D Polyclonal Antibody detects endogenous levels of Rho D protein.
Formulation	Liquid in PBS containing 50% glycerol, 0.5% BSA and 0.02% sodium azide..
Storage	Store at -20°C. Avoid repeated freeze-thaw cycles.
Protein Name	Rho-related GTP-binding protein RhoD
Gene Name	RHOD
Cellular localization	Cell membrane ; Lipid-anchor ; Cytoplasmic side . Early endosome . Colocalizes with RAB5 to early endosomes (By similarity). .
Purification	The antibody was affinity-purified from rabbit antiserum by affinity-chromatography using epitope-specific immunogen.
Clonality	Polyclonal

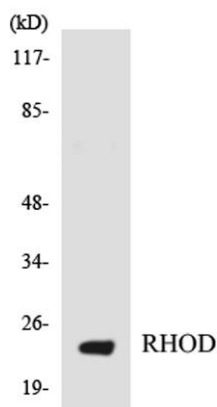
Concentration	1 mg/ml
Observed band	25kD
Human Gene ID	29984
Human Swiss-Prot Number	O00212
Alternative Names	RHOD; ARHD; Rho-related GTP-binding protein RhoD; Rho-related protein HP1; RhoHP1

Background

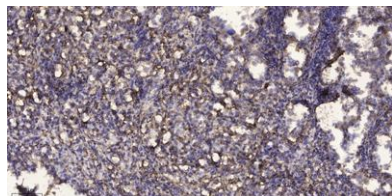
Ras homolog, or Rho, proteins interact with protein kinases and may serve as targets for activated GTPase. They play a critical role in muscle differentiation. The protein encoded by this gene binds GTP and is a member of the small GTPase superfamily. It is involved in endosome dynamics and reorganization of the actin cytoskeleton, and it may coordinate membrane transport with the function of the cytoskeleton. Two transcript variants encoding different isoforms have been found for this gene. [provided by RefSeq, Jul 2014],



Western blot analysis of various cells using Rho D Polyclonal Antibody diluted at 1:500



Western blot analysis of the lysates from HT-29 cells using RHOD antibody.



Immunohistochemical analysis of paraffin-embedded human Squamous cell carcinoma of lung. 1, Antibody was diluted at 1:200(4° overnight). 2, Tris-EDTA,pH9.0 was used for antigen retrieval. 3,Secondary antibody was diluted at 1:200(room temperature, 45min).