

## RCL rabbit pAb

**Cat#: orb766210 (Manual)**

For research use only. Not intended for diagnostic use.

<b>Product Name</b>	RCL rabbit pAb
<b>Host species</b>	Rabbit
<b>Applications</b>	WB;IHC
<b>Species Cross-Reactivity</b>	Human;Rat;Mouse;
<b>Recommended dilutions</b>	WB 1:500-2000;IHC-p 1:50-300
<b>Immunogen</b>	The antiserum was produced against synthesized peptide derived from human RCL. AA range:1-50
<b>Specificity</b>	RCL Polyclonal Antibody detects endogenous levels of RCL protein.
<b>Formulation</b>	Liquid in PBS containing 50% glycerol, 0.5% BSA and 0.02% sodium azide..
<b>Storage</b>	Store at -20°C. Avoid repeated freeze-thaw cycles.
<b>Protein Name</b>	Deoxyribonucleoside 5'-monophosphate N-glycosidase
<b>Gene Name</b>	RCL
<b>Cellular localization</b>	Cytoplasm . Nucleus .
<b>Purification</b>	The antibody was affinity-purified from rabbit antiserum by affinity-chromatography using epitope-specific immunogen.
<b>Clonality</b>	Polyclonal

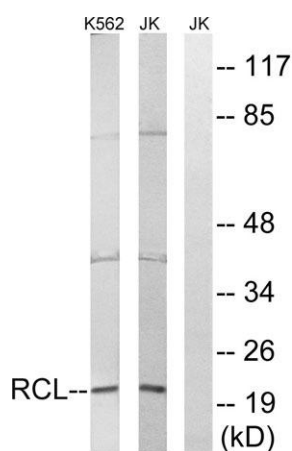
<b>Concentration</b>	1 mg/ml
<b>Observed band</b>	22kD
<b>Human Gene ID</b>	10591
<b>Human Swiss-Prot Number</b>	O43598
<b>Alternative Names</b>	RCL; C6orf108; Deoxyribonucleoside 5'-monophosphate N-glycosidase; c-Myc-responsive protein Rcl

### Background

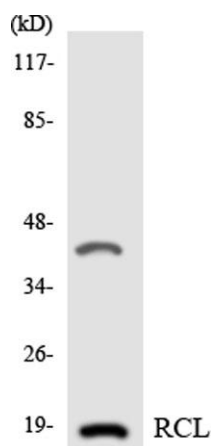
This gene was identified on the basis of its stimulation by c-Myc protein. The latter is a transcription factor that participates in the regulation of cell proliferation, differentiation, and apoptosis. The exact function of this gene is not known but studies in rat suggest a role in cellular proliferation and c-Myc-mediated transformation. Two alternative transcripts encoding different proteins have been described. [provided by RefSeq, Jul 2008],



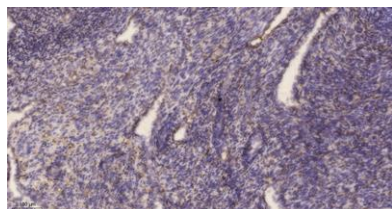
**Western Blot analysis of various cells using RCL Polyclonal Antibody**



**Western blot analysis of lysates from Jurkat and K562 cells, using RCL Antibody. The lane on the right is blocked with the synthesized peptide.**



Western blot analysis of the lysates from 293 cells using RCL antibody.



Immunohistochemical analysis of paraffin-embedded human uterus. 1, Antibody was diluted at 1:200(4° overnight). 2, Tris-EDTA,pH9.0 was used for antigen retrieval. 3,Secondary antibody was diluted at 1:200(room temperature, 45min).