

RASSF6 rabbit pAb**Cat#: orb766205 (Manual)**

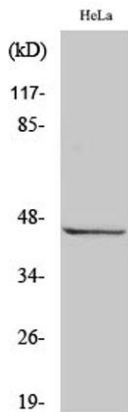
For research use only. Not intended for diagnostic use.

Product Name	RASSF6 rabbit pAb
Host species	Rabbit
Applications	WB;ELISA
Species Cross-Reactivity	Human;Rat;Mouse;
Recommended dilutions	Western Blot: 1/500 - 1/2000. ELISA: 1/10000. Not yet tested in other applications.
Immunogen	The antiserum was produced against synthesized peptide derived from human RASSF6. AA range:129-178
Specificity	RASSF6 Polyclonal Antibody detects endogenous levels of RASSF6 protein.
Formulation	Liquid in PBS containing 50% glycerol, 0.5% BSA and 0.02% sodium azide..
Storage	Store at -20°C. Avoid repeated freeze-thaw cycles.
Protein Name	Ras association domain-containing protein 6
Gene Name	RASSF6
Cellular localization	
Purification	The antibody was affinity-purified from rabbit antiserum by affinity-chromatography using epitope-specific immunogen.
Clonality	Polyclonal

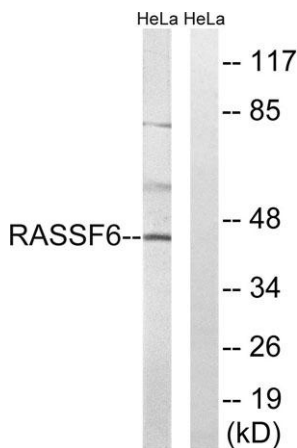
Concentration	1 mg/ml
Observed band	45kD
Human Gene ID	166824
Human Swiss-Prot Number	Q6ZTQ3
Alternative Names	RASSF6; Ras association domain-containing protein 6

Background

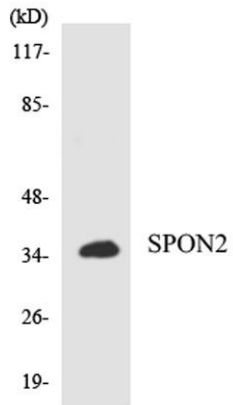
This gene encodes a member of the Ras-association domain family (RASSF). Members of this family form the core of a highly conserved tumor suppressor network, the Salvador-Warts-Hippo (SWH) pathway. The protein encoded by this gene is a Ras effector protein that induces apoptosis. A genomic region containing this gene has been linked to susceptibility to viral bronchiolitis. Alternative splicing results in multiple transcript variants and protein isoforms. [provided by RefSeq, Jul 2012],



Western Blot analysis of various cells using RASSF6 Polyclonal Antibody



Western blot analysis of lysates from HeLa cells, using RASSF6 Antibody. The lane on the right is blocked with the synthesized peptide.



Western blot analysis of the lysates from K562 cells using RASSF6 antibody.